



Ministry of Tourism

Vol. 38

**HANDBOOK OF STATISTICAL
DATA ON TOURISM 2018**

Republic of Mauritius

**HANDBOOK OF STATISTICAL
DATA ON TOURISM
YEAR 2018**

FOREWORD

Handbook of Statistical Data on Tourism

Vol. 38

2018

This report is a yearly publication of the Ministry of Tourism. It is designed to present, in a concise manner, information pertaining to the tourism industry.

Prior to 1994, data on passenger traffic has been compiled from a 10% sample of embarkation and disembarkation cards filled in by passengers. However, as from January 1994, it is based on movements of all passengers including travellers of cruise ships. Thus, disaggregated data for 1994 onwards may not be strictly comparable to previous series.

It is hoped that the data will meet the needs and requirements of stakeholders and all those who take an interest in the evolution of tourism in Mauritius. The cooperation of Statistics Mauritius, the Bank of Mauritius, the Civil Aviation Department, the Passport and Immigration Office and all hotels is acknowledged.

(Mrs. SEEWORUTHUN Devi Chand Anandi Rye)

Permanent Secretary

SUMMARY: MAIN TOURISM STATISTICS

2018

- 1,399,408 tourist arrivals were recorded during the year.

- The principal tourist markets were France (20.4%), United Kingdom (10.9%) and Reunion Island (9.9%).

- The average length of stay of a tourist was 10.4 nights.

- Gross earnings from tourism amounted to Rs 64,037 million.

- There were 113 hotels in operation with a total room capacity of 13,574 and a total bed capacity of 30,427.

- Total room and total bed occupancy rates of all hotels were 75% and 67% respectively.

DEFINITIONS AND NOTES

Tourist

- a) Prior to 1964, a tourist was defined as a non-resident staying in Mauritius for more than 24 hours but less than 6 months.
- b) From 1964 to 2008, a tourist was defined as a non-resident staying in Mauritius for more than 24 hours but less than a year and was not involved in any gainful occupation.
- c) As from 2009, a tourist is defined as a non-resident staying overnight but less than a year, and who has no employer-employee relationship with a resident.

The figures for the three periods are nevertheless comparable because of the small number of tourists staying for more than 6 months.

Visitor

Visitors include the following:

- a) Tourists as defined above and
- b) Excursionists or same day visitors, i.e. non-residents, other than those who do not leave the airport/ships, who depart on the same day they arrived.

Tourist nights

Prior to 2010, tables on tourist nights show the number of nights spent by tourists who were present in the country during the period under review. Thus, the number of tourist nights for 2009 includes:

- a) nights spent during 2009 by tourists who arrived prior to 1st January 2009; and
- b) nights spent during 2009 by tourists who arrived during the same year.

However, nights spent after 31st December 2009 by tourists who arrived in 2009 are excluded.

As from year 2010, the number of tourist nights for year Y refers to nights spent by tourists who departed in year Y.

Seasonal index

The seasonal index is the ratio of monthly tourist arrivals to monthly average number of tourist arrivals for the year under review.

$$\text{Seasonal Index} = \frac{\text{Monthly tourist arrivals} \times 100}{\text{Monthly average tourist arrivals for the year}}$$

Occupancy rate

The room/bed occupancy rate is the ratio of room/bed nights rented to the total number of room/bed nights available.

$$= \frac{\text{Total number of room/bed nights rented} \times 100}{\text{Total number of room/bed nights available}}$$

Large hotels

Large hotels are well established beach hotels of over 80 rooms

CONTENTS

	Page
Summary : Main Tourism Statistics	i
Definitions and Notes	ii
Table 1 : Passenger arrivals and departures by gender, 1999 - 2018	1
Table 2 : Passenger arrivals and departures by type of passenger, 2013 - 2018	1
Table 3 : Monthly passenger arrivals and departures by type of passenger, 2018	2
Table 4 : Passenger arrivals : number and indices, 2014 - 2018	2
Table 5 : Departure of Mauritian residents by country of disembarkation, 2013 - 2018	3
Table 6 : Tourist arrivals by mode of travel and tourist nights spent during period, 2005 - 2018	3
Table 7 : Tourist arrivals by month of arrival, 2009 - 2018	4
Table 8 : Percentage distribution of tourist arrivals by month of arrival, 2009 - 2018	4
Table 9 : Tourist arrivals : Seasonal index, 2009 - 2018	6
Table 10 : Tourist arrivals by country of residence, 2013 - 2018	7
Table 11 : Percentage distribution of tourist arrivals by country of residence, 2013 - 2018	10
Table 12 : Monthly tourist arrivals by country of residence, 2018	13
Table 13 : Percentage distribution of monthly tourist arrivals by country of residence, 2018	16
Table 14 : Percentage distribution of tourist arrivals by purpose of visit, 2011 - 2017	19
Table 15 : Percentage distribution of tourist arrivals by type of accommodation, 2011 - 2017	19
Table 16 : The main tourist generating countries by rank, 2014 - 2018	20
Table 17 : Tourist nights by country of residence, 2009 - 2018	21
Table 18 : Percentage distribution of tourist nights by country of residence, 2009 - 2018	23
Table 19 : Average length of stay (nights) of tourists by country of residence, 2009 - 2018	24
Table 20 : Gross earnings (Rs Million) from tourism, 2009 - 2018	25
Table 21 : Expenditure of tourists by country of residence, 2011 - 2017	26
Table 22 : Expenditure of tourists by type of expenditure, 2011 - 2017	26
Table 23 : Average expenditure of tourists by country of residence, 2011 - 2017	27
Table 24 : Hotels, rooms and bedplaces, 2009 - 2018	27
Table 25 : Monthly occupancy rates in all hotels, 2014 - 2018	28
Table 26 : Monthly occupancy rates in large hotels, 2014 - 2018	28
Table 27 : Employment in large establishments of the tourism industry as at end of March, 2009 - 2018	29
Selected Tourism Statistics, 1986 - 2018	29
Fig 1 : Total arrivals, tourist arrivals and tourist nights, 2009 - 2018	5
Fig 2 : Tourist arrivals by month of arrival, 2014 - 2018	5
Fig 3 : Tourist arrivals : Seasonality in 2009 and 2018	6
Fig 4 : Percentage distribution of tourist arrivals by country of residence, 2018	19
Fig 5 : Gross earnings (Rs Million) from tourism, 2009 - 2018	25

Table 1 - Passenger ¹ arrivals and departures by gender, 1999 - 2018

Period	Arrivals			Departures			Net overseas Migration
	Total	Male	Female	Total	Male	Female	
1999	777,931	407,706	370,225	764,116	399,850	364,266	+ 13,815
2000	865,222	451,443	413,779	846,039	441,622	404,417	+ 19,183
2001	858,182	447,224	410,958	850,296	442,776	407,520	+ 7,886
2002	891,106	464,173	426,933	882,521	459,565	422,956	+ 8,585
2003	904,990	472,554	432,436	884,190	459,847	424,343	+ 20,800
2004	939,715	489,647	450,068	918,460	477,267	441,193	+ 21,255
2005	989,913	515,073	474,840	976,132	508,308	467,824	+ 13,781
2006	1,016,864	530,944	485,920	1,004,706	523,884	480,822	+ 12,158
2007	1,177,231	614,819	562,412	1,176,130	611,666	564,464	+ 1,101
2008	1,226,428	640,659	585,769	1,206,749	629,234	577,515	+ 19,679
2009	1,156,579	595,584	560,995	1,153,569	595,214	558,355	+ 3,010
2010	1,252,038	644,966	607,072	1,257,008	647,738	609,270	- 4,970
2011	1,294,387	669,155	625,232	1,293,139	667,622	625,517	+ 1,248
2012	1,286,844	666,572	620,272	1,286,091	666,334	619,757	+ 753
2013	1,321,633	684,259	637,374	1,320,887	682,892	637,995	+ 746
2014	1,389,213	714,261	674,952	1,385,137	709,699	675,438	+ 4,076
2015	1,523,221	777,408	745,813	1,520,162	774,496	745,666	+ 3,059
2016	1,686,359	855,426	830,933	1,681,249	851,516	829,733	+ 5,110
2017	1,781,021	901,952	879,069	1,777,295	897,714	879,581	+ 3,726
2018 ²	1,862,289	942,579	919,710	1,859,697	937,867	921,831	+ 2,592

¹ Excluding inter island traffic between the main island of Mauritius and the other constituent islands of the Republic of Mauritius and direct transit but includes international traffic between Rodrigues and Reunion Island.

² Provisional

Table 2 - Passenger ¹ arrivals and departures by type of passenger, 2013 - 2018

Type of passenger	2013	2014	2015	2016	2017	2018 ²
Arrivals						
Visitors ³	1,014,818	1,065,030	1,173,891	1,306,873	1,371,475	1,431,117
- On holiday	922,970	969,157	1,077,442	1,200,047	1,260,231	1,307,653
- On business	36,614	37,710	42,028	44,133	46,856	50,463
- On conference	6,866	7,072	6,310	6,264	5,700	8,010
- In transit	44,675	47,447	44,208	52,948	54,749	61,617
- Other and not stated	3,693	3,644	3,903	3,481	3,939	3,374
Mauritian residents	235,440	230,654	250,998	269,461	292,852	307,850
Other & Not Stated	71,375	93,529	98,332	110,025	116,694	123,322
Total arrivals	1,321,633	1,389,213	1,523,221	1,686,359	1,781,021	1,862,289
Departures						
Visitors	1,011,416	1,057,727	1,164,300	1,291,771	1,350,755	1,408,687
Mauritian residents	227,855	222,906	242,445	260,467	282,764	296,083
Other	81,616	104,504	113,417	129,011	143,776	154,927
Total departures	1,320,887	1,385,137	1,520,162	1,681,249	1,777,295	1,859,697

¹ Excluding inter island traffic between the main island of Mauritius and the other constituent islands of the Republic of Mauritius and direct transit but includes international traffic between Rodrigues and Reunion Island.

² Provisional

³ Including non-residents who left the airport but stayed in the country for less than a day

Table 3 - Monthly passenger ¹ arrivals and departures by type of passenger, 2018

Type of passenger	Jan	Feb	Mar	Apr	May	Jun	Jul	Aug	Sep	Oct	Nov	Dec	Year 2018 ²
Arrivals													
Visitors	126,481	120,376	122,804	109,366	102,317	85,387	117,319	110,738	104,126	136,365	135,065	160,773	1,431,117
- On holiday	114,536	108,638	111,572	98,407	93,625	76,375	108,332	101,335	94,684	125,369	122,457	152,323	1,307,653
- On business	3,104	4,075	4,497	4,253	4,407	4,525	4,137	3,615	4,785	5,026	5,193	2,846	50,463
- On conference	140	202	443	335	961	1,289	339	1,427	706	599	1,311	258	8,010
- In transit	8,532	7,275	6,038	6,231	3,114	2,806	4,032	4,005	3,646	5,068	5,744	5,126	61,617
- Other & N.Stated	169	186	254	140	210	392	479	356	305	303	360	220	3,374
Mauritian residents	28,587	19,470	23,245	27,512	19,981	20,754	30,080	29,455	24,984	23,054	24,942	35,786	307,850
Other	12,209	11,836	10,167	9,543	7,933	7,548	8,711	8,450	7,991	10,151	13,823	14,960	123,322
Total arrivals	167,277	151,682	156,216	146,421	130,231	113,689	156,110	148,643	137,101	169,570	173,830	211,519	1,862,289
Departures													
Visitors	158,683	114,065	120,584	115,141	112,066	81,186	104,158	120,805	100,574	126,630	129,727	125,068	1,408,687
Mauritian residents	23,162	20,235	25,179	24,603	18,911	21,575	29,461	25,524	25,635	21,166	28,810	31,822	296,083
Other	15,662	14,511	11,798	11,194	9,015	8,702	10,035	10,272	9,457	10,987	20,897	22,397	154,927
Total departures	197,507	148,811	157,561	150,938	139,992	111,463	143,654	156,601	135,666	158,783	179,434	179,287	1,859,697

¹ Excluding inter island traffic between the main island of Mauritius and the other constituent islands of the Republic of Mauritius and direct transit but includes international traffic between Rodrigues and Reunion Island.

² Provisional

Table 4 - Passenger arrivals : number and indices, 2014 - 2018

Category	2014	2015	2016	2017	2018 ¹
Total arrivals (000's)	1,389.2	1,523.2	1,686.4	1,781.0	1,862.3
Index (2014=100)	100.0	109.6	121.4	128.2	134.1
Tourist arrivals (000's)	1,038.3	1,151.3	1,275.2	1,341.9	1,399.4
Index (2014=100)	100.0	110.9	122.8	129.2	134.8
Tourist nights ² (000's)	11,266.8	12,050	13,118	13,641	14,296
Index (2014=100)	100.0	107.0	116.4	121.1	126.9
Average length of stay (nights)	10.9	10.6	10.4	10.3	10.4

¹ Provisional

² Tourist nights for a reference period refer to nights spent by tourists departing in that reference period

Table 5 - Departure of Mauritian Residents by country of disembarkation ¹, 2013 - 2018

Country of disembarkation	2013	2014	2015	2016	2017	2018 ²
Australia	7,982	7,281	8,040	8,019	8,411	8,848
France	32,180	29,280	31,752	31,546	29,268	28,925
Germany	1,944	1,639	1,544	2,440	3,334	3,904
Hong Kong SAR ³	7,286	5,198	4,940	4,596	4,807	5,090
India	22,531	19,436	19,001	20,848	22,493	26,607
Italy	2,507	2,359	1,595	1,365	1,873	856
Malagasy Republic	9,051	8,662	8,698	9,378	8,418	8,833
Malaysia	8,337	10,957	12,983	12,912	5,281	1,670
Reunion Island	34,582	30,887	33,710	34,228	43,561	40,081
Seychelles	4,957	5,630	9,135	10,383	10,703	9,509
Singapore	7,267	2,737	1,721	9,537	14,974	15,714
South Africa, Rep. of	21,819	22,066	23,361	26,411	27,751	29,002
Switzerland	124	94	0	118	675	1,166
United Arab Emirates	41,698	53,626	61,575	61,765	64,558	70,193
United Kingdom	20,187	17,726	18,175	17,414	19,423	19,698
Other & Not Stated	5,403	5,328	6,215	9,507	17,234	25,987
All Countries	227,855	222,906	242,445	260,467	282,764	296,083

¹ Country of disembarkation may either be the country of final destination or the transit country

² Provisional

³ Special Administrative Region of China

Table 6 - Tourist arrivals by mode of travel and tourist nights spent during period, 2005 - 2018

Year	Mode of travel			Tourist nights spent during period	% change over previous year	
	Sea	Air	Total		Tourist arrivals	Tourist nights
2005	13,321	747,742	761,063	7,498,251	+ 5.9	+ 5.3
2006	13,249	775,027	788,276	7,760,679	+ 3.6	+ 3.5
2007	12,163	894,808	906,971	8,986,934	+ 15.1	+ 15.8
2008	15,961	914,495	930,456	9,218,625	+ 2.6	+ 2.6
2009	23,265	848,091	871,356	8,639,304	- 6.4	- 6.3
2010 ¹	23,648	911,179	934,827	9,336,446	+ 7.3	...
2011	25,047	939,595	964,642	9,494,297	+ 3.2	+ 1.7
2012	16,930	948,511	965,441	10,043,683	+ 0.1	+ 5.8
2013	12,815	979,688	992,503	10,675,598	+ 2.8	+ 6.3
2014	3,336	1,034,998	1,038,334	11,266,751	+ 4.6	+ 5.5
2015	19,425	1,131,827	1,151,252	12,049,901	+ 10.9	+ 7.0
2016	28,365	1,246,862	1,275,227	13,117,907	+ 10.8	+ 8.9
2017	29,565	1,312,295	1,341,860	13,640,751	+ 5.2	+ 4.0
2018 ²	39,720	1,359,688	1,399,408	14,296,274	+ 4.3	+ 4.8

¹ Revised as from 2010; a new methodology for computation of tourist nights is being used. "Tourist nights" for a reference period refer to nights spent by tourists departing in that reference period.

² Provisional

Table 7 - Tourist arrivals by month of arrival, 2009 - 2018

Month of arrival	2009	2010	2011	2012	2013	2014	2015	2016	2017	2018 ¹
January	88,591	91,857	101,887	98,837	92,810	96,285	103,556	118,426	124,362	120,974
February	67,892	72,366	77,390	79,331	81,141	78,899	91,066	100,706	105,049	115,600
March	76,425	85,748	83,349	83,827	91,690	87,876	96,425	108,704	110,271	119,841
April	68,969	64,797	79,173	79,137	76,174	88,102	90,221	91,992	111,432	104,967
May	64,761	71,055	68,214	71,396	74,641	78,545	87,054	94,830	96,557	101,138
June	46,866	53,327	54,591	54,625	54,999	60,440	65,459	71,806	78,188	84,345
July	71,872	77,009	78,034	76,166	77,365	81,934	95,694	108,122	112,347	115,881
August	63,365	65,093	66,865	65,896	73,320	78,466	89,422	94,920	100,191	109,471
September	60,144	65,404	64,880	66,369	71,926	74,508	84,456	91,384	96,282	102,849
October	80,197	87,340	90,616	89,994	92,500	101,323	109,014	130,421	130,070	134,052
November	78,544	85,982	87,348	84,398	89,092	91,213	106,204	115,782	121,496	132,247
December	103,730	114,849	112,295	115,465	116,845	120,743	132,681	148,134	155,615	158,043
Whole Year	871,356	934,827	964,642	965,441	992,503	1,038,334	1,151,252	1,275,227	1,341,860	1,399,408

¹ Provisional

4

Table 8 - Percentage distribution of tourist arrivals by month of arrival, 2009 - 2018

Month of arrival	2009	2010	2011	2012	2013	2014	2015	2016	2017	2018 ¹
January	10.2	9.8	10.6	10.2	9.4	9.3	9.0	9.3	9.3	8.6
February	7.8	7.7	8.0	8.2	8.2	7.6	7.9	7.9	7.8	8.3
March	8.8	9.2	8.6	8.7	9.2	8.5	8.4	8.5	8.2	8.6
April	7.9	6.9	8.2	8.2	7.7	8.5	7.8	7.2	8.3	7.5
May	7.4	7.6	7.1	7.4	7.5	7.6	7.6	7.4	7.2	7.2
June	5.4	5.7	5.7	5.7	5.5	5.8	5.7	5.6	5.8	6.0
July	8.2	8.2	8.1	7.9	7.8	7.9	8.3	8.5	8.4	8.3
August	7.3	7.0	6.9	6.8	7.4	7.6	7.8	7.4	7.5	7.8
September	6.9	7.0	6.7	6.9	7.2	7.2	7.3	7.2	7.2	7.3
October	9.2	9.3	9.4	9.3	9.3	9.8	9.5	10.2	9.7	9.6
November	9.0	9.2	9.1	8.7	9.0	8.8	9.2	9.1	9.1	9.5
December	11.9	12.3	11.6	12.0	11.8	11.6	11.5	11.6	11.6	11.3
Whole Year	100.0	100.0	100.0	100.0	100.0	100.0	100.0	100.0	100.0	100.0

¹ Provisional

Figure 1 - Total arrivals, tourist arrivals and tourist nights, 2009 - 2018

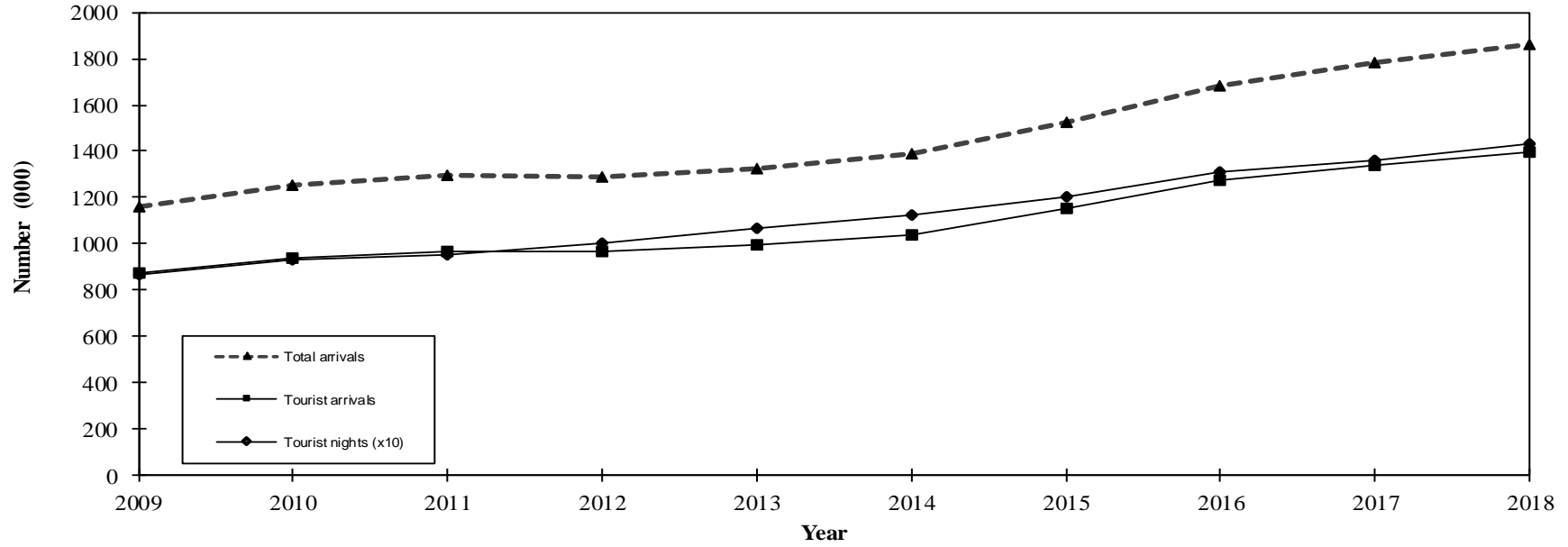


Figure 2 - Tourist arrivals by month of arrival, 2014 - 2018

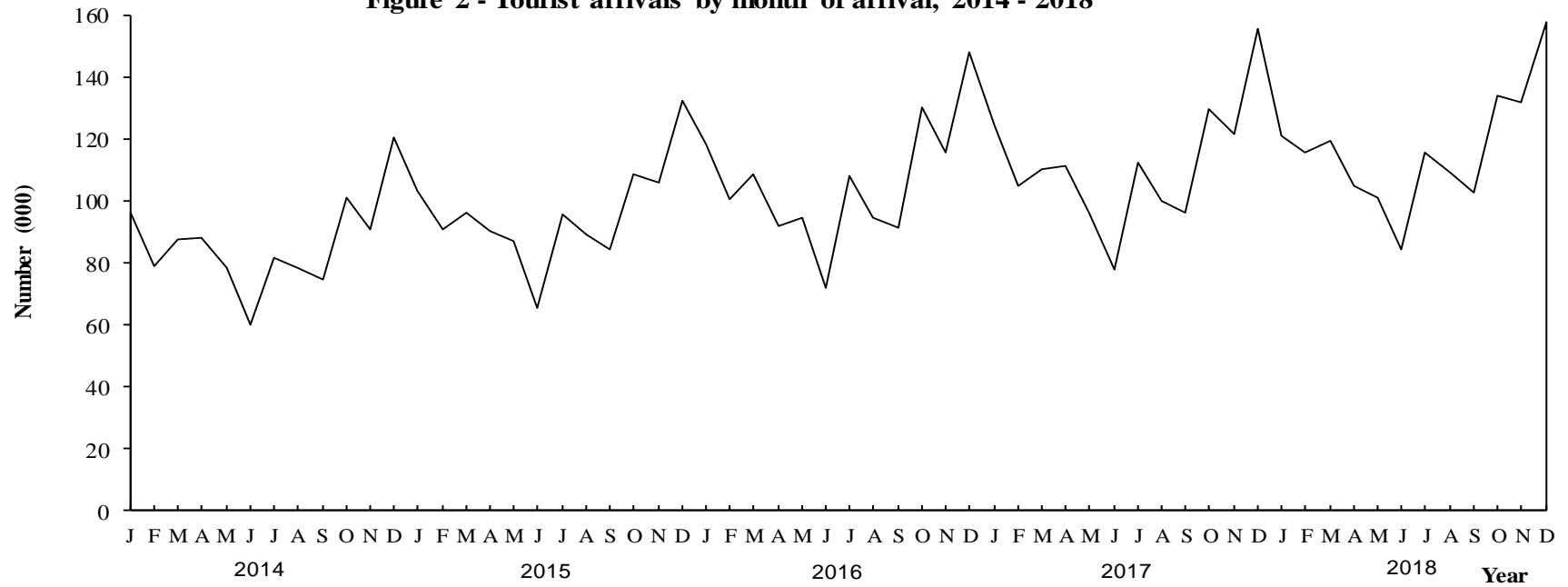


Table 9 - Tourist arrivals: Seasonal index, 2009 - 2018

Month of arrival	2009	2010	2011	2012	2013	2014	2015	2016	2017	2018 ¹
January	122	118	127	123	112	111	108	111	111	104
February	93	93	96	99	98	91	95	95	94	99
March	105	110	104	104	111	102	101	102	99	103
April	95	83	98	98	92	102	94	87	100	90
May	89	91	85	89	90	91	91	89	86	87
June	65	68	68	68	66	70	68	68	70	72
July	99	99	97	95	94	95	100	102	100	99
August	87	84	83	82	89	91	93	89	90	94
September	83	84	81	82	87	86	88	86	86	88
October	110	112	113	112	112	117	114	123	116	115
November	108	110	109	105	108	105	111	109	109	113
December	143	147	140	144	141	140	138	139	139	136
Range	78	79	72	76	75	70	70	72	69	63

¹ Provisional

Note: Slight discrepancies may occur due to rounding off of figures

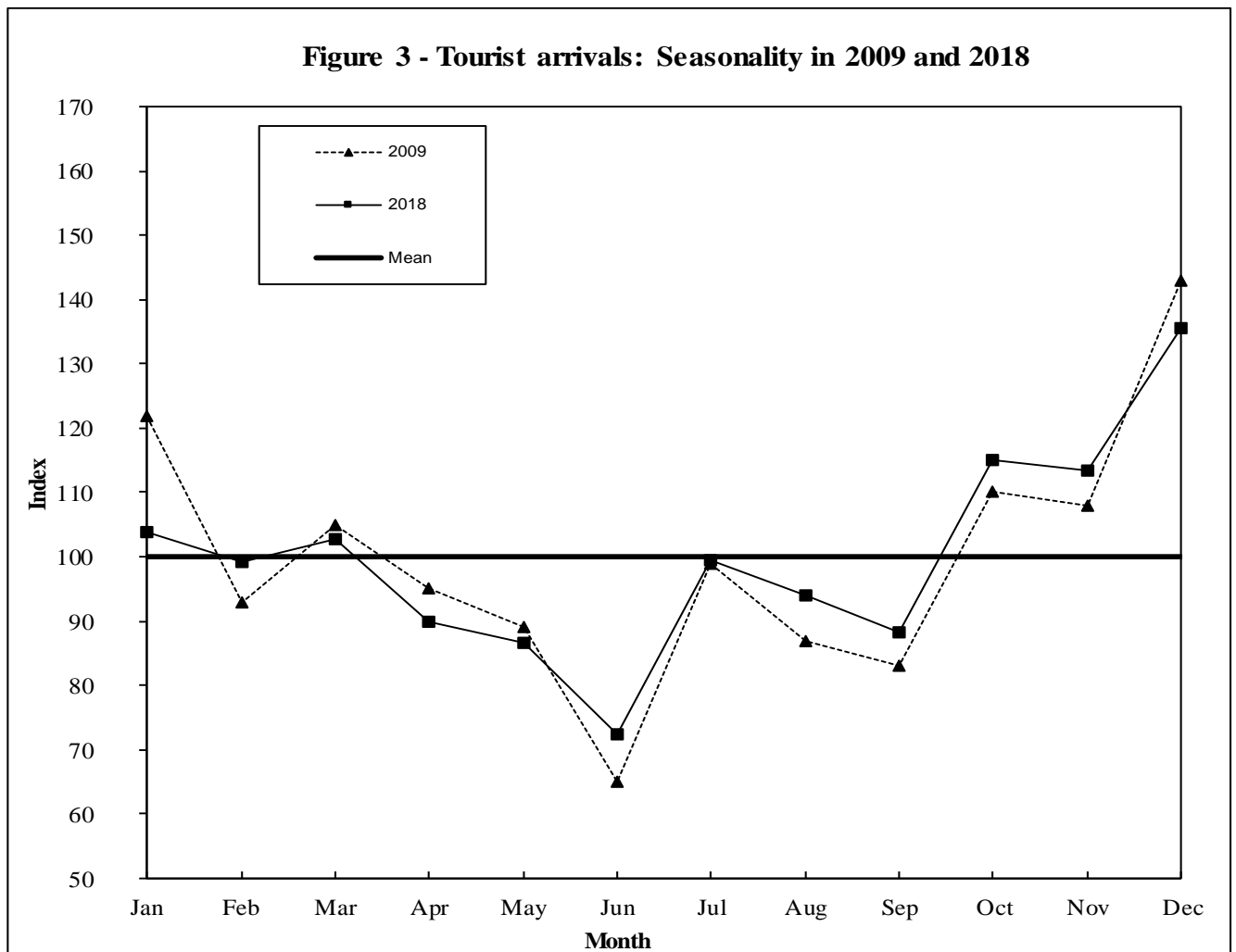


Table 10 - Tourist arrivals by country of residence, 2013 - 2018

Country of Residence	2013	2014	2015	2016	2017	2018 ¹
EUROPE	547,061	570,684	631,627	734,506	780,209	824,334
Austria	7,932	8,303	11,425	16,643	17,596	18,572
Belgium	11,562	11,465	14,223	15,675	16,420	15,727
Bulgaria	597	700	901	1,707	1,386	1,913
Czech Republic	5,545	6,852	7,265	8,503	10,495	14,254
Croatia	291	320	446	449	675	823
Denmark	3,280	3,446	4,600	6,817	6,971	7,418
Estonia	256	282	332	489	808	1,049
Finland	1,864	2,618	3,895	4,415	4,461	4,949
France	244,737	243,655	254,323	271,963	273,419	285,371
Germany	60,433	62,212	75,237	103,761	118,856	132,780
Greece	831	755	954	1,122	1,034	937
Hungary	820	1,022	1,509	2,432	2,829	3,277
Ireland	1,806	2,284	2,479	3,441	4,020	4,004
Italy	31,145	29,553	29,185	31,337	35,101	38,361
Latvia	328	276	344	589	672	800
Lithuania	361	352	429	792	1,046	829
Luxembourg	1,007	1,227	1,612	1,534	1,802	1,924
Netherlands	4,498	4,795	6,926	10,080	13,269	16,419
Norway	3,083	3,020	4,135	4,589	5,005	5,332
Poland	2,998	3,548	5,330	10,126	11,318	10,806
Portugal	1,619	2,095	2,212	4,222	4,254	4,912
Romania	1,219	1,074	1,645	2,813	2,691	4,368
Serbia	297	246	301	455	605	656
Slovakia	1,580	2,065	2,090	2,934	3,735	4,237
Slovenia	688	698	807	916	1,312	1,741
Spain	8,428	8,632	10,013	15,304	15,252	15,063
Sweden	4,576	6,452	11,634	14,551	15,516	15,539
Switzerland	27,751	29,273	30,680	36,272	40,252	41,080
Turkey	705	698	1,004	3,486	2,594	2,600
United Kingdom	97,963	115,239	129,754	141,904	149,807	151,913
<i>CIS ² Countries</i>	<i>17,701</i>	<i>16,222</i>	<i>14,489</i>	<i>13,624</i>	<i>15,226</i>	<i>14,920</i>
<i>of which:</i>						
<i>Belarus</i>	<i>427</i>	<i>483</i>	<i>463</i>	<i>422</i>	<i>480</i>	<i>509</i>
<i>Kazakhstan</i>	<i>207</i>	<i>241</i>	<i>320</i>	<i>355</i>	<i>402</i>	<i>306</i>
<i>Russian Federation</i>	<i>14,903</i>	<i>13,287</i>	<i>11,406</i>	<i>9,295</i>	<i>11,153</i>	<i>11,007</i>
<i>Ukraine</i>	<i>1,876</i>	<i>1,975</i>	<i>2,024</i>	<i>3,230</i>	<i>2,854</i>	<i>2,765</i>
<i>Other CIS</i>	<i>288</i>	<i>236</i>	<i>276</i>	<i>322</i>	<i>337</i>	<i>333</i>
Other European	1,160	1,305	1,448	1,561	1,782	1,760
AFRICA	277,828	274,164	284,682	291,890	301,898	312,618
<i>IOC ³ Countries</i>	<i>165,445</i>	<i>162,561</i>	<i>162,470</i>	<i>165,136</i>	<i>165,914</i>	<i>159,130</i>
<i>of which:</i>						
<i>Comoros</i>	<i>1,147</i>	<i>938</i>	<i>758</i>	<i>800</i>	<i>886</i>	<i>956</i>
<i>Malagasy Republic</i>	<i>13,941</i>	<i>13,038</i>	<i>12,215</i>	<i>11,740</i>	<i>12,730</i>	<i>14,365</i>
<i>Reunion Island</i>	<i>143,174</i>	<i>141,659</i>	<i>143,845</i>	<i>146,203</i>	<i>146,040</i>	<i>138,439</i>
<i>Seychelles</i>	<i>7,183</i>	<i>6,926</i>	<i>5,652</i>	<i>6,393</i>	<i>6,258</i>	<i>5,370</i>

¹ Provisional² Commonwealth of Independent States³ Indian Ocean Commission

Table 10 (Cont'd) - Tourist arrivals by country of residence, 2013 - 2018

Country of Residence	2013	2014	2015	2016	2017	2018 ¹
Algeria	216	574	430	310	404	303
Angola	505	570	434	505	549	637
Benin	68	48	79	66	108	119
Botswana	666	758	817	1,088	1,072	1,070
Burundi	80	100	115	93	108	84
Cameroon	159	205	215	321	371	445
Congo	411	396	697	724	703	603
Egypt	514	412	517	607	728	765
Ethiopia	334	231	308	272	392	309
Gabon	265	191	178	215	149	160
Ghana	435	434	680	889	897	1,011
Ivory Coast	208	256	360	350	496	494
Kenya	2,865	3,266	3,376	3,185	3,422	4,035
Lesotho	145	177	177	223	236	337
Malawi	233	260	338	402	363	420
Mayotte	1,088	1,042	1,024	1,189	1,340	1,355
Morocco	445	458	597	674	771	901
Mozambique	698	806	927	1,144	876	809
Namibia	1,237	1,393	1,474	1,715	1,505	1,358
Niger	98	105	147	164	159	160
Nigeria	907	792	1,217	1,372	1,331	2,157
Rwanda	151	137	117	183	221	217
Senegal	179	164	210	201	298	275
South Africa, Rep. of	94,137	93,075	101,943	104,834	112,129	128,097
Sudan	90	105	107	79	175	91
Kingdom of Eswatini ⁴	283	378	303	370	451	424
Tanzania	625	529	604	625	697	797
Togo	41	51	103	78	84	68
Tunisia	399	424	383	382	577	420
Uganda	533	482	529	469	555	676
Zimbabwe	1,526	1,735	1,892	2,047	2,553	2,496
Zambia	899	891	867	999	994	1,124
Other African	1,943	1,158	1,047	979	1,270	1,271
ASIA	132,474	158,330	197,735	208,233	211,380	213,422
Afghanistan	662	687	739	787	764	743
Bangladesh	525	563	828	844	1,157	1,195
Hong Kong SAR ⁵	1,449	1,454	1,327	1,342	1,512	1,519
India	57,253	61,162	72,135	82,670	86,294	85,765
Indonesia	1,835	1,936	2,270	2,375	2,670	2,519
Israel	552	617	762	1,161	1,698	2,165
Japan	1,754	1,653	1,415	2,655	2,315	2,046
Korea Republic	2,776	3,182	3,494	6,025	6,858	7,204
Malaysia	3,172	2,969	2,557	4,628	4,352	2,264
Maldives	48	47	82	54	58	51
Nepal	180	376	385	587	374	557
Pakistan	994	1,291	1,093	1,610	1,088	1,207
People's Rep. of China	41,909	63,363	89,584	79,374	72,951	65,736
Philippines	1,797	1,680	2,017	2,488	2,742	2,872

¹ Provisional⁴ Kingdom of Eswatini formerly known as Swaziland⁵ Special Administrative Region of China

Table 10 (Cont'd) - Tourist arrivals by country of residence, 2013 - 2018

Country of Residence	2013	2014	2015	2016	2017	2018 ¹
Singapore	2,110	1,849	1,779	2,840	3,230	2,809
Sri Lanka	492	388	322	379	517	535
Taiwan	1,592	1,375	1,257	1,457	1,592	1,767
Thailand	330	299	377	466	682	486
Vietnam	541	480	457	729	707	740
<i>MIDDLE EAST Countries</i>	<i>12,302</i>	<i>12,783</i>	<i>14,647</i>	<i>15,466</i>	<i>19,471</i>	<i>30,948</i>
<i>of which:</i>						
<i>Bahrain</i>	<i>181</i>	<i>116</i>	<i>145</i>	<i>165</i>	<i>171</i>	<i>215</i>
<i>Iran</i>	<i>221</i>	<i>545</i>	<i>800</i>	<i>837</i>	<i>607</i>	<i>258</i>
<i>Jordan</i>	<i>184</i>	<i>168</i>	<i>166</i>	<i>154</i>	<i>184</i>	<i>152</i>
<i>Kuwait</i>	<i>279</i>	<i>517</i>	<i>527</i>	<i>461</i>	<i>548</i>	<i>661</i>
<i>Lebanon</i>	<i>441</i>	<i>358</i>	<i>403</i>	<i>380</i>	<i>447</i>	<i>499</i>
<i>Oman</i>	<i>235</i>	<i>222</i>	<i>228</i>	<i>245</i>	<i>207</i>	<i>240</i>
<i>Qatar</i>	<i>362</i>	<i>399</i>	<i>416</i>	<i>385</i>	<i>237</i>	<i>250</i>
<i>Saudi Arabia</i>	<i>2,136</i>	<i>2,390</i>	<i>2,854</i>	<i>3,164</i>	<i>5,142</i>	<i>16,507</i>
<i>United Arab Emirates</i>	<i>8,159</i>	<i>8,000</i>	<i>9,049</i>	<i>9,614</i>	<i>11,866</i>	<i>12,058</i>
<i>Other Middle East</i>	<i>104</i>	<i>68</i>	<i>59</i>	<i>61</i>	<i>62</i>	<i>108</i>
Other Asian	201	176	208	296	348	294
OCEANIA	19,626	18,663	19,084	20,071	22,898	22,604
Australia	18,340	17,434	17,835	18,559	21,271	20,949
New Zealand	668	714	696	939	1,052	1,002
Other Oceanian	618	515	553	573	575	653
AMERICA	15,228	16,330	17,891	19,766	24,795	25,912
Brazil	2,894	2,455	1,947	2,912	4,659	3,743
Canada	4,426	4,669	5,608	6,060	6,908	7,747
USA	5,741	7,139	8,546	8,524	9,655	10,525
Other American	2,167	2,067	1,790	2,270	3,573	3,897
Others & not stated	286	163	233	761	680	518
All countries	992,503	1,038,334	1,151,252	1,275,227	1,341,860	1,399,408

¹ Provisional

Table 11 - Percentage distribution of tourist arrivals by country of residence, 2013 - 2018

Country of Residence	2013	2014	2015	2016	2017	2018 ¹
EUROPE	55.1	55.0	54.9	57.6	58.1	58.9
Austria	0.8	0.8	1.0	1.3	1.3	1.3
Belgium	1.2	1.1	1.2	1.2	1.2	1.1
Bulgaria	0.1	0.1	0.1	0.1	0.1	0.1
Czech Republic	0.6	0.7	0.6	0.7	0.8	1.0
Croatia	0.0	0.0	0.0	0.0	0.1	0.1
Denmark	0.3	0.3	0.4	0.5	0.5	0.5
Estonia	0.0	0.0	0.0	0.0	0.1	0.1
Finland	0.2	0.3	0.3	0.3	0.3	0.4
France	24.7	23.5	22.1	21.3	20.4	20.4
Germany	6.1	6.0	6.5	8.1	8.9	9.5
Greece	0.1	0.1	0.1	0.1	0.1	0.1
Hungary	0.1	0.1	0.1	0.2	0.2	0.2
Ireland	0.2	0.2	0.2	0.3	0.3	0.3
Italy	3.1	2.8	2.5	2.5	2.6	2.7
Latvia	0.0	0.0	0.0	0.0	0.1	0.1
Lithuania	0.0	0.0	0.0	0.1	0.1	0.1
Luxembourg	0.1	0.1	0.1	0.1	0.1	0.1
Netherlands	0.5	0.5	0.6	0.8	1.0	1.2
Norway	0.3	0.3	0.4	0.4	0.4	0.4
Poland	0.3	0.3	0.5	0.8	0.8	0.8
Portugal	0.2	0.2	0.2	0.3	0.3	0.4
Romania	0.1	0.1	0.1	0.2	0.2	0.3
Serbia	0.0	0.0	0.0	0.0	0.0	0.0
Slovakia	0.2	0.2	0.2	0.2	0.3	0.3
Slovenia	0.1	0.1	0.1	0.1	0.1	0.1
Spain	0.8	0.8	0.9	1.2	1.1	1.1
Sweden	0.5	0.6	1.0	1.1	1.2	1.1
Switzerland	2.8	2.8	2.7	2.8	3.0	2.9
Turkey	0.1	0.1	0.1	0.3	0.2	0.2
United Kingdom	9.9	11.1	11.3	11.1	11.2	10.9
<i>CIS ² Countries</i>	<i>1.8</i>	<i>1.6</i>	<i>1.3</i>	<i>1.1</i>	<i>1.1</i>	<i>1.1</i>
<i>of which:</i>						
<i>Belarus</i>	<i>0.0</i>	<i>0.0</i>	<i>0.0</i>	<i>0.0</i>	<i>0.0</i>	<i>0.0</i>
<i>Kazakhstan</i>	<i>0.0</i>	<i>0.0</i>	<i>0.0</i>	<i>0.0</i>	<i>0.0</i>	<i>0.0</i>
<i>Russian Federation</i>	<i>1.5</i>	<i>1.3</i>	<i>1.0</i>	<i>0.7</i>	<i>0.8</i>	<i>0.8</i>
<i>Ukraine</i>	<i>0.2</i>	<i>0.2</i>	<i>0.2</i>	<i>0.3</i>	<i>0.2</i>	<i>0.2</i>
<i>Other CIS</i>	<i>0.0</i>	<i>0.0</i>	<i>0.0</i>	<i>0.0</i>	<i>0.0</i>	<i>0.0</i>
Other European	0.1	0.1	0.1	0.1	0.1	0.1
AFRICA	28.0	26.4	24.7	22.9	22.5	22.3
<i>IOC ³ Countries</i>	<i>16.7</i>	<i>15.7</i>	<i>14.1</i>	<i>12.9</i>	<i>12.4</i>	<i>11.4</i>
<i>of which:</i>						
<i>Comoros</i>	<i>0.1</i>	<i>0.1</i>	<i>0.1</i>	<i>0.1</i>	<i>0.1</i>	<i>0.1</i>
<i>Malagasy Republic</i>	<i>1.4</i>	<i>1.3</i>	<i>1.1</i>	<i>0.9</i>	<i>0.9</i>	<i>1.0</i>
<i>Reunion Island</i>	<i>14.4</i>	<i>13.6</i>	<i>12.5</i>	<i>11.5</i>	<i>10.9</i>	<i>9.9</i>
<i>Seychelles</i>	<i>0.7</i>	<i>0.7</i>	<i>0.5</i>	<i>0.5</i>	<i>0.5</i>	<i>0.4</i>

¹ Provisional² Commonwealth of Independent States³ Indian Ocean Commission

Table 11 (Cont'd) - Percentage distribution of tourist arrivals by country of residence, 2013 - 2018

Country of Residence	2013	2014	2015	2016	2017	2018 ¹
Algeria	0.0	0.1	0.0	0.0	0.0	0.0
Angola	0.1	0.1	0.0	0.0	0.0	0.0
Benin	0.0	0.0	0.0	0.0	0.0	0.0
Botswana	0.1	0.1	0.1	0.1	0.1	0.1
Burundi	0.0	0.0	0.0	0.0	0.0	0.0
Cameroon	0.0	0.0	0.0	0.0	0.0	0.0
Congo	0.0	0.0	0.1	0.1	0.1	0.0
Egypt	0.1	0.0	0.0	0.0	0.1	0.1
Ethiopia	0.0	0.0	0.0	0.0	0.0	0.0
Gabon	0.0	0.0	0.0	0.0	0.0	0.0
Ghana	0.0	0.0	0.1	0.1	0.1	0.1
Ivory Coast	0.0	0.0	0.0	0.0	0.0	0.0
Kenya	0.3	0.3	0.3	0.2	0.3	0.3
Lesotho	0.0	0.0	0.0	0.0	0.0	0.0
Malawi	0.0	0.0	0.0	0.0	0.0	0.0
Mayotte	0.1	0.1	0.1	0.1	0.1	0.1
Morocco	0.0	0.0	0.1	0.1	0.1	0.1
Mozambique	0.1	0.1	0.1	0.1	0.1	0.1
Namibia	0.1	0.1	0.1	0.1	0.1	0.1
Niger	0.0	0.0	0.0	0.0	0.0	0.0
Nigeria	0.1	0.1	0.1	0.1	0.1	0.2
Rwanda	0.0	0.0	0.0	0.0	0.0	0.0
Senegal	0.0	0.0	0.0	0.0	0.0	0.0
South Africa, Rep. of	9.5	9.0	8.9	8.2	8.4	9.2
Sudan	0.0	0.0	0.0	0.0	0.0	0.0
Kingdom of Eswatini ⁴	0.0	0.0	0.0	0.0	0.0	0.0
Tanzania	0.1	0.1	0.1	0.0	0.1	0.1
Togo	0.0	0.0	0.0	0.0	0.0	0.0
Tunisia	0.0	0.0	0.0	0.0	0.0	0.0
Uganda	0.1	0.0	0.0	0.0	0.0	0.0
Zimbabwe	0.2	0.2	0.2	0.2	0.2	0.2
Zambia	0.1	0.1	0.1	0.1	0.1	0.1
Other African	0.2	0.1	0.1	0.1	0.1	0.1
ASIA	13.3	15.2	17.2	16.3	15.8	15.3
Afghanistan	0.1	0.1	0.1	0.1	0.1	0.1
Bangladesh	0.1	0.1	0.1	0.1	0.1	0.1
Hong Kong SAR ⁵	0.1	0.1	0.1	0.1	0.1	0.1
India	5.8	5.9	6.3	6.5	6.4	6.1
Indonesia	0.2	0.2	0.2	0.2	0.2	0.2
Israel	0.1	0.1	0.1	0.1	0.1	0.2
Japan	0.2	0.2	0.1	0.2	0.2	0.1
Korea Republic	0.3	0.3	0.3	0.5	0.5	0.5
Malaysia	0.3	0.3	0.2	0.4	0.3	0.2
Maldives	0.0	0.0	0.0	0.0	0.0	0.0
Nepal	0.0	0.0	0.0	0.0	0.0	0.0
Pakistan	0.1	0.1	0.1	0.1	0.1	0.1
People's Rep. of China	4.2	6.1	7.8	6.2	5.4	4.7
Philippines	0.2	0.2	0.2	0.2	0.2	0.2

¹ Provisional⁴ Kingdom of Eswatini formerly known as Swaziland⁵ Special Administrative Region of China

Table 11 (Cont'd) - Percentage distribution of tourist arrivals by country of residence, 2013 - 2018

Country of Residence	2013	2014	2015	2016	2017	2018 ¹
Singapore	0.2	0.2	0.2	0.2	0.2	0.2
Sri Lanka	0.0	0.0	0.0	0.0	0.0	0.0
Taiwan	0.2	0.1	0.1	0.1	0.1	0.1
Thailand	0.0	0.0	0.0	0.0	0.1	0.0
Vietnam	0.1	0.0	0.0	0.1	0.1	0.1
<i>MIDDLE EAST Countries</i>	<i>1.2</i>	<i>1.2</i>	<i>1.3</i>	<i>1.2</i>	<i>1.5</i>	<i>2.2</i>
<i>of which:</i>						
<i>Bahrain</i>	<i>0.0</i>	<i>0.0</i>	<i>0.0</i>	<i>0.0</i>	<i>0.0</i>	<i>0.0</i>
<i>Iran</i>	<i>0.0</i>	<i>0.1</i>	<i>0.1</i>	<i>0.1</i>	<i>0.0</i>	<i>0.0</i>
<i>Jordan</i>	<i>0.0</i>	<i>0.0</i>	<i>0.0</i>	<i>0.0</i>	<i>0.0</i>	<i>0.0</i>
<i>Kuwait</i>	<i>0.0</i>	<i>0.0</i>	<i>0.0</i>	<i>0.0</i>	<i>0.0</i>	<i>0.0</i>
<i>Lebanon</i>	<i>0.0</i>	<i>0.0</i>	<i>0.0</i>	<i>0.0</i>	<i>0.0</i>	<i>0.0</i>
<i>Oman</i>	<i>0.0</i>	<i>0.0</i>	<i>0.0</i>	<i>0.0</i>	<i>0.0</i>	<i>0.0</i>
<i>Qatar</i>	<i>0.0</i>	<i>0.0</i>	<i>0.0</i>	<i>0.0</i>	<i>0.0</i>	<i>0.0</i>
<i>Saudi Arabia</i>	<i>0.2</i>	<i>0.2</i>	<i>0.2</i>	<i>0.2</i>	<i>0.4</i>	<i>1.2</i>
<i>United Arab Emirates</i>	<i>0.8</i>	<i>0.8</i>	<i>0.8</i>	<i>0.8</i>	<i>0.9</i>	<i>0.9</i>
<i>Other Middle East</i>	<i>0.0</i>	<i>0.0</i>	<i>0.0</i>	<i>0.0</i>	<i>0.0</i>	<i>0.0</i>
Other Asian	0.0	0.0	0.0	0.0	0.0	0.0
OCEANIA	2.0	1.8	1.7	1.6	1.7	1.6
Australia	1.8	1.7	1.5	1.5	1.6	1.5
New Zealand	0.1	0.1	0.1	0.1	0.1	0.1
Other Oceanian	0.1	0.0	0.0	0.0	0.0	0.0
AMERICA	1.5	1.6	1.6	1.5	1.8	1.9
Brazil	0.3	0.2	0.2	0.2	0.3	0.3
Canada	0.4	0.4	0.5	0.5	0.5	0.6
USA	0.6	0.7	0.7	0.7	0.7	0.8
Other American	0.2	0.2	0.2	0.2	0.3	0.3
Others & not stated	0.0	0.0	0.0	0.1	0.1	0.0
All countries	100.0	100.0	100.0	100.0	100.0	100.0

¹ Provisional

Table 12 - Monthly tourist arrivals by country of residence, 2018

Country of Residence	Jan	Feb	Mar	Apr	May	Jun	Jul	Aug	Sep	Oct	Nov	Dec	Year 2018 ¹
EUROPE	73,352	79,404	73,469	66,349	49,030	35,936	58,726	56,907	57,269	85,253	94,271	94,368	824,334
Austria	2,334	2,726	2,177	1,047	789	474	858	725	878	1,811	2,682	2,071	18,572
Belgium	818	778	1,066	1,623	819	943	2,047	1,157	1,206	1,907	1,637	1,726	15,727
Bulgaria	338	314	262	126	55	49	27	42	53	150	163	334	1,913
Czech Republic	1,352	2,333	2,281	1,190	502	395	509	357	817	977	1,711	1,830	14,254
Croatia	117	70	91	67	20	38	30	42	46	75	103	124	823
Denmark	882	1,505	1,108	259	201	114	750	193	225	832	702	647	7,418
Estonia	172	183	118	12	10	23	25	6	30	32	170	268	1,049
Finland	792	851	777	79	103	79	88	81	128	204	872	895	4,949
France	28,222	30,547	24,014	28,000	17,978	9,695	19,763	19,003	13,195	30,935	31,150	32,869	285,371
Germany	10,127	12,343	12,312	8,006	10,271	6,476	7,831	8,010	12,830	12,941	17,158	14,475	132,780
Greece	63	72	48	63	58	84	66	95	58	91	114	125	937
Hungary	639	548	412	157	90	79	110	70	104	302	304	462	3,277
Ireland	269	173	331	225	276	425	382	352	391	473	345	362	4,004
Italy	3,463	2,821	2,830	2,995	1,371	1,722	1,965	3,968	3,241	3,701	4,747	5,537	38,361
Latvia	127	79	81	54	38	27	22	9	30	113	107	113	800
Lithuania	122	104	94	47	57	39	32	31	42	68	116	77	829
Luxembourg	90	119	202	311	88	45	134	281	127	161	178	188	1,924
Netherlands	1,056	1,237	1,021	1,263	1,027	1,083	2,251	1,848	1,389	1,344	1,453	1,447	16,419
Norway	458	647	637	155	108	437	987	138	249	277	590	649	5,332
Poland	1,681	1,350	759	694	380	497	533	436	660	564	1,782	1,470	10,806
Portugal	255	239	413	307	457	288	449	566	664	471	405	398	4,912
Romania	524	629	325	268	220	182	183	177	319	361	539	641	4,368
Serbia	102	107	63	28	23	33	21	31	34	49	55	110	656
Slovakia	574	731	823	396	172	106	74	70	166	243	446	436	4,237
Slovenia	151	235	118	195	84	81	112	46	77	241	154	247	1,741
Spain	565	550	964	578	697	725	2,368	2,861	2,132	1,520	921	1,182	15,063
Sweden	2,831	2,901	2,071	279	205	352	382	153	226	953	2,043	3,143	15,539
Switzerland	3,165	3,445	3,823	4,618	1,599	1,102	3,014	1,258	2,872	6,448	5,372	4,364	41,080
Turkey	457	283	216	190	140	166	146	199	153	144	214	292	2,600
United Kingdom	8,971	10,041	12,384	11,629	10,270	9,667	12,961	14,088	14,112	16,571	16,377	14,842	151,913
<i>CIS ² Countries</i>	<i>2,501</i>	<i>1,319</i>	<i>1,479</i>	<i>1,351</i>	<i>850</i>	<i>434</i>	<i>469</i>	<i>459</i>	<i>687</i>	<i>1,136</i>	<i>1,456</i>	<i>2,779</i>	<i>14,920</i>
<i>of which:</i>													
<i>Belarus</i>	<i>64</i>	<i>34</i>	<i>62</i>	<i>39</i>	<i>22</i>	<i>21</i>	<i>26</i>	<i>20</i>	<i>25</i>	<i>23</i>	<i>48</i>	<i>125</i>	<i>509</i>
<i>Kazakhstan</i>	<i>41</i>	<i>24</i>	<i>60</i>	<i>7</i>	<i>10</i>	<i>11</i>	<i>23</i>	<i>15</i>	<i>20</i>	<i>18</i>	<i>29</i>	<i>48</i>	<i>306</i>
<i>Russian Federation</i>	<i>1,872</i>	<i>969</i>	<i>1,067</i>	<i>1,070</i>	<i>612</i>	<i>268</i>	<i>298</i>	<i>308</i>	<i>486</i>	<i>861</i>	<i>1,082</i>	<i>2,114</i>	<i>11,007</i>
<i>Ukraine</i>	<i>494</i>	<i>264</i>	<i>247</i>	<i>223</i>	<i>188</i>	<i>119</i>	<i>101</i>	<i>91</i>	<i>141</i>	<i>216</i>	<i>255</i>	<i>426</i>	<i>2,765</i>
<i>Other CIS</i>	<i>30</i>	<i>28</i>	<i>43</i>	<i>12</i>	<i>18</i>	<i>15</i>	<i>21</i>	<i>25</i>	<i>15</i>	<i>18</i>	<i>42</i>	<i>66</i>	<i>333</i>
Other European	134	124	169	137	72	76	137	155	128	158	205	265	1,760

¹ Provisional² Commonwealth of Independent States

Table 12 (Cont'd) - Monthly tourist arrivals by country of residence, 2018

Country of Residence	Jan	Feb	Mar	Apr	May	Jun	Jul	Aug	Sep	Oct	Nov	Dec	Year 2018 ¹
AFRICA	30,349	13,493	27,406	21,310	26,046	20,817	30,024	25,906	24,341	30,332	18,329	44,265	312,618
<i>IOC ³ Countries</i>	21,985	6,036	15,284	7,765	16,344	7,416	18,019	12,806	8,921	19,314	7,848	17,392	159,130
<i>of which:</i>													
<i>Comoros</i>	56	95	81	93	86	58	74	53	106	72	97	85	956
<i>Malagasy Republic</i>	603	809	1,104	1,227	1,070	900	1,335	1,882	1,264	1,394	1,099	1,678	14,365
<i>Reunion Island</i>	20,996	4,832	13,725	5,998	14,705	6,083	16,246	10,374	7,136	17,512	6,190	14,642	138,439
<i>Seychelles</i>	330	300	374	447	483	375	364	497	415	336	462	987	5,370
Algeria	18	19	21	16	20	22	28	48	31	24	24	32	303
Angola	27	53	67	71	23	45	55	36	48	75	38	99	637
Benin	5	4	11	9	10	18	4	18	10	10	12	8	119
Botswana	35	57	71	71	104	56	139	99	121	68	82	167	1,070
Burundi	4	5	10	8	6	6	11	5	12	4	11	2	84
Cameroon	19	21	16	30	31	38	49	63	61	31	45	41	445
Congo	37	42	41	82	52	37	46	65	37	42	43	79	603
Egypt	35	48	50	52	64	64	64	84	65	85	103	51	765
Ethiopia	12	14	18	21	80	29	21	13	29	20	19	33	309
Gabon	6	10	12	17	13	21	14	15	7	16	7	22	160
Ghana	57	49	58	81	57	116	83	85	121	82	154	68	1,011
Ivory Coast	23	40	26	48	25	61	40	54	30	67	40	40	494
Kenya	177	160	265	250	236	452	375	527	322	323	323	625	4,035
Lesotho	26	23	18	5	25	17	82	35	18	25	27	36	337
Malawi	30	15	19	22	51	16	65	32	55	49	36	30	420
Mayotte	34	155	83	148	143	39	169	63	40	121	71	289	1,355
Morocco	54	79	71	78	64	70	74	119	66	90	72	64	901
Mozambique	71	52	64	48	44	48	84	59	59	64	48	168	809
Namibia	82	56	102	183	184	58	77	180	83	64	85	204	1,358
Niger	6	5	13	9	7	39	8	8	20	11	14	20	160
Nigeria	71	114	227	123	137	334	164	197	199	194	243	154	2,157
Rwanda	12	19	5	5	9	24	27	28	31	19	14	24	217
Senegal	10	15	14	23	14	44	27	13	20	34	34	27	275
South Africa, Rep. of	7,196	6,076	10,382	11,482	7,830	11,222	9,644	10,371	13,281	8,835	8,280	23,498	128,097
Sudan	4	8	1	9	3	16	3	4	16	4	15	8	91
Kingdom of Eswatini ⁴	32	17	28	17	41	26	46	63	34	36	27	57	424
Tanzania	16	30	73	58	45	63	82	71	88	65	99	107	797
Togo	1	2	12	1	4	10	6	5	8	12	4	3	68
Tunisia	38	33	29	29	24	26	39	51	22	43	31	55	420
Uganda	32	23	46	36	58	57	49	53	86	70	76	90	676
Zimbabwe	108	96	134	285	166	125	170	375	190	185	182	480	2,496
Zambia	42	61	63	76	66	84	125	132	83	136	78	178	1,124
Other African	44	56	72	152	66	118	135	129	127	114	144	114	1,271

¹ Provisional³ Indian Ocean Commission⁴ Kingdom of Eswatini formerly known as Swaziland

Table 12 (Cont'd) - Monthly tourist arrivals by country of residence, 2018

Country of Residence	Jan	Feb	Mar	Apr	May	Jun	Jul	Aug	Sep	Oct	Nov	Dec	Year 2018 ¹
ASIA	12,795	19,477	15,230	13,790	23,002	24,066	22,496	22,948	17,030	14,292	14,668	13,628	213,422
Afghanistan	62	69	80	50	50	41	57	68	52	50	86	78	743
Bangladesh	224	58	45	49	61	68	124	41	112	147	167	99	1,195
Hong Kong SAR ⁵	59	98	158	81	75	118	139	191	167	131	92	210	1,519
India	5,057	6,248	5,905	5,967	13,825	11,896	7,500	6,714	5,273	4,469	6,650	6,261	85,765
Indonesia	111	296	545	110	117	136	107	207	347	207	150	186	2,519
Israel	125	170	115	77	314	78	120	143	385	139	268	231	2,165
Japan	97	168	242	186	155	135	153	168	206	159	160	217	2,046
Korea Republic	422	350	511	655	610	529	377	337	489	1,051	1,084	789	7,204
Malaysia	87	165	207	219	159	309	118	230	254	174	194	148	2,264
Maldives	0	2	7	1	6	15	3	5	2	3	6	1	51
Nepal	98	24	42	38	41	70	35	44	25	96	15	29	557
Pakistan	110	122	100	127	145	80	144	48	54	74	103	100	1,207
People's Rep. of China	4,115	9,806	4,107	4,166	5,622	6,007	6,548	8,101	6,545	5,140	3,250	2,329	65,736
Philippines	201	298	383	187	202	162	149	266	276	273	300	175	2,872
Singapore	91	182	251	223	141	272	286	239	241	237	301	345	2,809
Sri Lanka	31	30	40	55	62	38	25	32	66	60	50	46	535
Taiwan	143	214	214	89	97	74	157	227	286	119	58	89	1,767
Thailand	14	23	44	56	28	31	41	54	33	49	64	49	486
Vietnam	25	131	88	19	23	31	88	56	63	139	46	31	740
<i>MIDDLE EAST Countries</i>	<i>1,720</i>	<i>1,002</i>	<i>2,129</i>	<i>1,404</i>	<i>1,258</i>	<i>3,951</i>	<i>6,298</i>	<i>5,743</i>	<i>2,118</i>	<i>1,538</i>	<i>1,588</i>	<i>2,199</i>	<i>30,948</i>
<i>of which:</i>													
<i>Bahrain</i>	<i>2</i>	<i>10</i>	<i>12</i>	<i>10</i>	<i>12</i>	<i>30</i>	<i>46</i>	<i>38</i>	<i>17</i>	<i>6</i>	<i>7</i>	<i>25</i>	<i>215</i>
<i>Iran</i>	<i>2</i>	<i>17</i>	<i>129</i>	<i>6</i>	<i>12</i>	<i>13</i>	<i>24</i>	<i>18</i>	<i>8</i>	<i>6</i>	<i>12</i>	<i>11</i>	<i>258</i>
<i>Jordan</i>	<i>4</i>	<i>6</i>	<i>18</i>	<i>10</i>	<i>5</i>	<i>10</i>	<i>16</i>	<i>22</i>	<i>12</i>	<i>15</i>	<i>17</i>	<i>17</i>	<i>152</i>
<i>Kuwait</i>	<i>18</i>	<i>50</i>	<i>55</i>	<i>42</i>	<i>14</i>	<i>123</i>	<i>81</i>	<i>121</i>	<i>51</i>	<i>27</i>	<i>30</i>	<i>49</i>	<i>661</i>
<i>Lebanon</i>	<i>31</i>	<i>33</i>	<i>47</i>	<i>37</i>	<i>20</i>	<i>49</i>	<i>49</i>	<i>48</i>	<i>53</i>	<i>60</i>	<i>30</i>	<i>42</i>	<i>499</i>
<i>Oman</i>	<i>10</i>	<i>19</i>	<i>15</i>	<i>4</i>	<i>12</i>	<i>24</i>	<i>52</i>	<i>38</i>	<i>18</i>	<i>12</i>	<i>20</i>	<i>16</i>	<i>240</i>
<i>Qatar</i>	<i>16</i>	<i>4</i>	<i>25</i>	<i>8</i>	<i>44</i>	<i>32</i>	<i>26</i>	<i>30</i>	<i>5</i>	<i>19</i>	<i>16</i>	<i>25</i>	<i>250</i>
<i>Saudi Arabia</i>	<i>1,233</i>	<i>305</i>	<i>518</i>	<i>550</i>	<i>356</i>	<i>2,236</i>	<i>3,992</i>	<i>3,716</i>	<i>1,231</i>	<i>625</i>	<i>632</i>	<i>1,113</i>	<i>16,507</i>
<i>United Arab Emirates</i>	<i>398</i>	<i>551</i>	<i>1,294</i>	<i>730</i>	<i>778</i>	<i>1,430</i>	<i>1,999</i>	<i>1,704</i>	<i>704</i>	<i>757</i>	<i>816</i>	<i>897</i>	<i>12,058</i>
<i>Other Middle East</i>	<i>6</i>	<i>7</i>	<i>16</i>	<i>7</i>	<i>5</i>	<i>4</i>	<i>13</i>	<i>8</i>	<i>19</i>	<i>11</i>	<i>8</i>	<i>4</i>	<i>108</i>
Other Asian	3	21	17	31	11	25	27	34	36	37	36	16	294
OCEANIA	1,796	1,163	1,537	1,918	1,280	1,689	2,286	2,077	2,406	1,922	1,811	2,719	22,604
Australia	1,685	1,039	1,382	1,830	1,147	1,558	2,103	1,943	2,279	1,795	1,648	2,540	20,949
New Zealand	53	70	88	54	81	80	89	102	92	73	101	119	1,002
Other Oceanian	58	54	67	34	52	51	94	32	35	54	62	60	653
AMERICA	2,653	2,035	2,138	1,550	1,738	1,806	2,318	1,597	1,765	2,195	3,103	3,014	25,912
Brazil	499	208	243	285	374	177	209	216	406	364	443	319	3,743
Canada	533	538	585	389	458	602	904	518	412	590	1,011	1,207	7,747
USA	972	757	895	635	677	896	1,013	647	733	894	1,218	1,188	10,525
Other American	649	532	415	241	229	131	192	216	214	347	431	300	3,897
Others & not stated	29	28	61	50	42	31	31	36	38	58	65	49	518
All countries	120,974	115,600	119,841	104,967	101,138	84,345	115,881	109,471	102,849	134,052	132,247	158,043	1,399,408

¹ Provisional⁵ Special Administrative Region of China

Table 13 - Percentage distribution of monthly tourist arrivals by country of residence, 2018

Country of Residence	Jan	Feb	Mar	Apr	May	Jun	Jul	Aug	Sep	Oct	Nov	Dec	Year 2018 ¹
EUROPE	60.6	68.7	61.3	63.2	48.5	42.6	50.7	52.0	55.7	63.6	71.3	59.7	58.9
Austria	1.9	2.4	1.8	1.0	0.8	0.6	0.7	0.7	0.9	1.4	2.0	1.3	1.3
Belgium	0.7	0.7	0.9	1.5	0.8	1.1	1.8	1.1	1.2	1.4	1.2	1.1	1.1
Bulgaria	0.3	0.3	0.2	0.1	0.1	0.1	0.0	0.0	0.1	0.1	0.1	0.2	0.1
Czech Republic	1.1	2.0	1.9	1.1	0.5	0.5	0.4	0.3	0.8	0.7	1.3	1.2	1.0
Croatia	0.1	0.1	0.1	0.1	0.0	0.0	0.0	0.0	0.0	0.1	0.1	0.1	0.1
Denmark	0.7	1.3	0.9	0.2	0.2	0.1	0.6	0.2	0.2	0.6	0.5	0.4	0.5
Estonia	0.1	0.2	0.1	0.0	0.0	0.0	0.0	0.0	0.0	0.0	0.1	0.2	0.1
Finland	0.7	0.7	0.6	0.1	0.1	0.1	0.1	0.1	0.1	0.2	0.7	0.6	0.4
France	23.3	26.4	20.0	26.7	17.8	11.5	17.1	17.4	12.8	23.1	23.6	20.8	20.4
Germany	8.4	10.7	10.3	7.6	10.2	7.7	6.8	7.3	12.5	9.7	13.0	9.2	9.5
Greece	0.1	0.1	0.0	0.1	0.1	0.1	0.1	0.1	0.1	0.1	0.1	0.1	0.1
Hungary	0.5	0.5	0.3	0.1	0.1	0.1	0.1	0.1	0.1	0.2	0.2	0.3	0.2
Ireland	0.2	0.1	0.3	0.2	0.3	0.5	0.3	0.3	0.4	0.4	0.3	0.2	0.3
Italy	2.9	2.4	2.4	2.9	1.4	2.0	1.7	3.6	3.2	2.8	3.6	3.5	2.7
Latvia	0.1	0.1	0.1	0.1	0.0	0.0	0.0	0.0	0.0	0.1	0.1	0.1	0.1
Lithuania	0.1	0.1	0.1	0.0	0.1	0.0	0.0	0.0	0.0	0.1	0.1	0.0	0.1
Luxembourg	0.1	0.1	0.2	0.3	0.1	0.1	0.1	0.3	0.1	0.1	0.1	0.1	0.1
Netherlands	0.9	1.1	0.9	1.2	1.0	1.3	1.9	1.7	1.4	1.0	1.1	0.9	1.2
Norway	0.4	0.6	0.5	0.1	0.1	0.5	0.9	0.1	0.2	0.2	0.4	0.4	0.4
Poland	1.4	1.2	0.6	0.7	0.4	0.6	0.5	0.4	0.6	0.4	1.3	0.9	0.8
Portugal	0.2	0.2	0.3	0.3	0.5	0.3	0.4	0.5	0.6	0.4	0.3	0.3	0.4
Romania	0.4	0.5	0.3	0.3	0.2	0.2	0.2	0.2	0.3	0.3	0.4	0.4	0.3
Serbia	0.1	0.1	0.1	0.0	0.0	0.0	0.0	0.0	0.0	0.0	0.0	0.1	0.0
Slovakia	0.5	0.6	0.7	0.4	0.2	0.1	0.1	0.1	0.2	0.2	0.3	0.3	0.3
Slovenia	0.1	0.2	0.1	0.2	0.1	0.1	0.1	0.0	0.1	0.2	0.1	0.2	0.1
Spain	0.5	0.5	0.8	0.6	0.7	0.9	2.0	2.6	2.1	1.1	0.7	0.7	1.1
Sweden	2.3	2.5	1.7	0.3	0.2	0.4	0.3	0.1	0.2	0.7	1.5	2.0	1.1
Switzerland	2.6	3.0	3.2	4.4	1.6	1.3	2.6	1.1	2.8	4.8	4.1	2.8	2.9
Turkey	0.4	0.2	0.2	0.2	0.1	0.2	0.1	0.2	0.1	0.1	0.2	0.2	0.2
United Kingdom	7.4	8.7	10.3	11.1	10.2	11.5	11.2	12.9	13.7	12.4	12.4	9.4	10.9
<i>CIS ² Countries</i>	<i>2.1</i>	<i>1.1</i>	<i>1.2</i>	<i>1.3</i>	<i>0.8</i>	<i>0.5</i>	<i>0.4</i>	<i>0.4</i>	<i>0.7</i>	<i>0.8</i>	<i>1.1</i>	<i>1.8</i>	<i>1.1</i>
<i>of which:</i>													
<i>Belarus</i>	<i>0.1</i>	<i>0.0</i>	<i>0.1</i>	<i>0.0</i>	<i>0.0</i>	<i>0.0</i>	<i>0.0</i>	<i>0.0</i>	<i>0.0</i>	<i>0.0</i>	<i>0.0</i>	<i>0.1</i>	<i>0.0</i>
<i>Kazakhstan</i>	<i>0.0</i>	<i>0.0</i>	<i>0.1</i>	<i>0.0</i>	<i>0.0</i>	<i>0.0</i>	<i>0.0</i>	<i>0.0</i>	<i>0.0</i>	<i>0.0</i>	<i>0.0</i>	<i>0.0</i>	<i>0.0</i>
<i>Russian Federation</i>	<i>1.5</i>	<i>0.8</i>	<i>0.9</i>	<i>1.0</i>	<i>0.6</i>	<i>0.3</i>	<i>0.3</i>	<i>0.3</i>	<i>0.5</i>	<i>0.6</i>	<i>0.8</i>	<i>1.3</i>	<i>0.8</i>
<i>Ukraine</i>	<i>0.4</i>	<i>0.2</i>	<i>0.2</i>	<i>0.2</i>	<i>0.2</i>	<i>0.1</i>	<i>0.1</i>	<i>0.1</i>	<i>0.1</i>	<i>0.2</i>	<i>0.2</i>	<i>0.3</i>	<i>0.2</i>
<i>Other CIS</i>	<i>0.0</i>	<i>0.0</i>	<i>0.0</i>	<i>0.0</i>	<i>0.0</i>	<i>0.0</i>	<i>0.0</i>	<i>0.0</i>	<i>0.0</i>	<i>0.0</i>	<i>0.0</i>	<i>0.0</i>	<i>0.0</i>
Other European	0.1	0.1	0.1	0.1	0.1	0.1	0.1	0.1	0.1	0.1	0.2	0.2	0.1

¹ Provisional

² Commonwealth of Independent States

Table 13 (Cont'd) - Percentage distribution of monthly tourist arrivals by country of residence, 2018

Country of Residence	Jan	Feb	Mar	Apr	May	Jun	Jul	Aug	Sep	Oct	Nov	Dec	Year 2018 ¹
AFRICA	25.1	11.7	22.9	20.3	25.8	24.7	25.9	23.7	23.7	22.6	13.9	28.0	22.3
<i>IOC³ Countries</i>	18.2	5.2	12.8	7.4	16.2	8.8	15.5	11.7	8.7	14.4	5.9	11.0	11.4
<i>of which:</i>													
<i>Comoros</i>	0.0	0.1	0.1	0.1	0.1	0.1	0.1	0.0	0.1	0.1	0.1	0.1	0.1
<i>Malagasy Republic</i>	0.5	0.7	0.9	1.2	1.1	1.1	1.2	1.7	1.2	1.0	0.8	1.1	1.0
<i>Reunion Island</i>	17.4	4.2	11.5	5.7	14.5	7.2	14.0	9.5	6.9	13.1	4.7	9.3	9.9
<i>Seychelles</i>	0.3	0.3	0.3	0.4	0.5	0.4	0.3	0.5	0.4	0.3	0.3	0.6	0.4
Algeria	0.0	0.0	0.0	0.0	0.0	0.0	0.0	0.0	0.0	0.0	0.0	0.0	0.0
Angola	0.0	0.0	0.1	0.1	0.0	0.1	0.0	0.0	0.0	0.1	0.0	0.1	0.0
Benin	0.0	0.0	0.0	0.0	0.0	0.0	0.0	0.0	0.0	0.0	0.0	0.0	0.0
Botswana	0.0	0.0	0.1	0.1	0.1	0.1	0.1	0.1	0.1	0.1	0.1	0.1	0.1
Burundi	0.0	0.0	0.0	0.0	0.0	0.0	0.0	0.0	0.0	0.0	0.0	0.0	0.0
Cameroon	0.0	0.0	0.0	0.0	0.0	0.0	0.0	0.1	0.1	0.0	0.0	0.0	0.0
Congo	0.0	0.0	0.0	0.1	0.1	0.0	0.0	0.1	0.0	0.0	0.0	0.0	0.0
Egypt	0.0	0.0	0.0	0.0	0.1	0.1	0.1	0.1	0.1	0.1	0.1	0.0	0.1
Ethiopia	0.0	0.0	0.0	0.0	0.1	0.0	0.0	0.0	0.0	0.0	0.0	0.0	0.0
Gabon	0.0	0.0	0.0	0.0	0.0	0.0	0.0	0.0	0.0	0.0	0.0	0.0	0.0
Ghana	0.0	0.0	0.0	0.1	0.1	0.1	0.1	0.1	0.1	0.1	0.1	0.0	0.1
Ivory Coast	0.0	0.0	0.0	0.0	0.0	0.1	0.0	0.0	0.0	0.0	0.0	0.0	0.0
Kenya	0.1	0.1	0.2	0.2	0.2	0.5	0.3	0.5	0.3	0.2	0.2	0.4	0.3
Lesotho	0.0	0.0	0.0	0.0	0.0	0.0	0.1	0.0	0.0	0.0	0.0	0.0	0.0
Malawi	0.0	0.0	0.0	0.0	0.1	0.0	0.1	0.0	0.1	0.0	0.0	0.0	0.0
Mayotte	0.0	0.1	0.1	0.1	0.1	0.0	0.1	0.1	0.0	0.1	0.1	0.2	0.1
Morocco	0.0	0.1	0.1	0.1	0.1	0.1	0.1	0.1	0.1	0.1	0.1	0.0	0.1
Mozambique	0.1	0.0	0.1	0.0	0.0	0.1	0.1	0.1	0.1	0.0	0.0	0.1	0.1
Namibia	0.1	0.0	0.1	0.2	0.2	0.1	0.1	0.2	0.1	0.0	0.1	0.1	0.1
Niger	0.0	0.0	0.0	0.0	0.0	0.0	0.0	0.0	0.0	0.0	0.0	0.0	0.0
Nigeria	0.1	0.1	0.2	0.1	0.1	0.4	0.1	0.2	0.2	0.1	0.2	0.1	0.2
Rwanda	0.0	0.0	0.0	0.0	0.0	0.0	0.0	0.0	0.0	0.0	0.0	0.0	0.0
Senegal	0.0	0.0	0.0	0.0	0.0	0.1	0.0	0.0	0.0	0.0	0.0	0.0	0.0
South Africa, Rep. of	5.9	5.3	8.7	10.9	7.7	13.3	8.3	9.5	12.9	6.6	6.3	14.9	9.2
Sudan	0.0	0.0	0.0	0.0	0.0	0.0	0.0	0.0	0.0	0.0	0.0	0.0	0.0
Kingdom of Eswatini ⁴	0.0	0.0	0.0	0.0	0.0	0.0	0.0	0.1	0.0	0.0	0.0	0.0	0.0
Tanzania	0.0	0.0	0.1	0.1	0.0	0.1	0.1	0.1	0.1	0.0	0.1	0.1	0.1
Togo	0.0	0.0	0.0	0.0	0.0	0.0	0.0	0.0	0.0	0.0	0.0	0.0	0.0
Tunisia	0.0	0.0	0.0	0.0	0.0	0.0	0.0	0.0	0.0	0.0	0.0	0.0	0.0
Uganda	0.0	0.0	0.0	0.0	0.1	0.1	0.0	0.0	0.1	0.1	0.1	0.1	0.0
Zimbabwe	0.1	0.1	0.1	0.3	0.2	0.1	0.1	0.3	0.2	0.1	0.1	0.3	0.2
Zambia	0.0	0.1	0.1	0.1	0.1	0.1	0.1	0.1	0.1	0.1	0.1	0.1	0.1
Other African	0.0	0.0	0.1	0.1	0.1	0.1	0.1	0.1	0.1	0.1	0.1	0.1	0.1

¹ Provisional

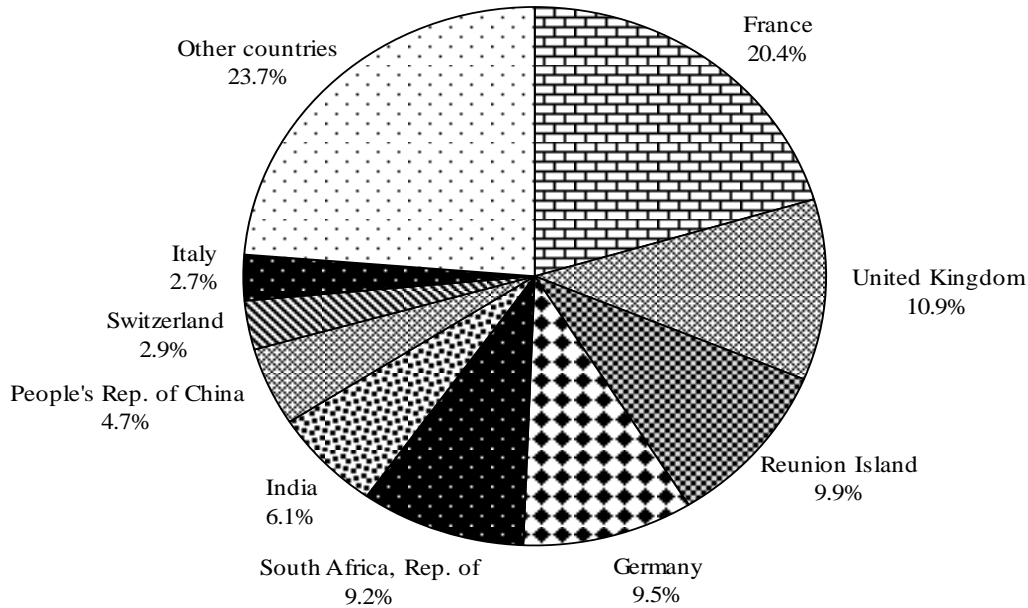
³ Indian Ocean Commission

⁴ Kingdom of Eswatini formerly known as Swaziland

Table 13 (Cont'd) - Percentage distribution of monthly tourist arrivals by country of residence, 2018

Country of Residence	Jan	Feb	Mar	Apr	May	Jun	Jul	Aug	Sep	Oct	Nov	Dec	Year 2018 ¹
ASIA	10.6	16.8	12.7	13.1	22.7	28.5	19.4	21.0	16.6	10.7	11.1	8.6	15.3
Afghanistan	0.1	0.1	0.1	0.0	0.0	0.0	0.0	0.1	0.1	0.0	0.1	0.0	0.1
Bangladesh	0.2	0.1	0.0	0.0	0.1	0.1	0.1	0.0	0.1	0.1	0.1	0.1	0.1
Hong Kong SAR ⁵	0.0	0.1	0.1	0.1	0.1	0.1	0.1	0.2	0.2	0.1	0.1	0.1	0.1
India	4.2	5.4	4.9	5.7	13.7	14.1	6.5	6.1	5.1	3.3	5.0	4.0	6.1
Indonesia	0.1	0.3	0.5	0.1	0.1	0.2	0.1	0.2	0.3	0.2	0.1	0.1	0.2
Israel	0.1	0.1	0.1	0.1	0.3	0.1	0.1	0.1	0.4	0.1	0.2	0.1	0.2
Japan	0.1	0.1	0.2	0.2	0.2	0.2	0.1	0.2	0.2	0.1	0.1	0.1	0.1
Korea Republic	0.3	0.3	0.4	0.6	0.6	0.6	0.3	0.3	0.5	0.8	0.8	0.5	0.5
Malaysia	0.1	0.1	0.2	0.2	0.2	0.4	0.1	0.2	0.2	0.1	0.1	0.1	0.2
Maldives	0.0	0.0	0.0	0.0	0.0	0.0	0.0	0.0	0.0	0.0	0.0	0.0	0.0
Nepal	0.1	0.0	0.0	0.0	0.0	0.1	0.0	0.0	0.0	0.1	0.0	0.0	0.0
Pakistan	0.1	0.1	0.1	0.1	0.1	0.1	0.1	0.0	0.1	0.1	0.1	0.1	0.1
People's Rep. of China	3.4	8.5	3.4	4.0	5.6	7.1	5.7	7.4	6.4	3.8	2.5	1.5	4.7
Philippines	0.2	0.3	0.3	0.2	0.2	0.2	0.1	0.2	0.3	0.2	0.2	0.1	0.2
Singapore	0.1	0.2	0.2	0.2	0.1	0.3	0.2	0.2	0.2	0.2	0.2	0.2	0.2
Sri Lanka	0.0	0.0	0.0	0.1	0.1	0.0	0.0	0.0	0.1	0.0	0.0	0.0	0.0
Taiwan	0.1	0.2	0.2	0.1	0.1	0.1	0.1	0.2	0.3	0.1	0.0	0.1	0.1
Thailand	0.0	0.0	0.0	0.1	0.0	0.0	0.0	0.0	0.0	0.0	0.0	0.0	0.0
Vietnam	0.0	0.1	0.1	0.0	0.0	0.0	0.1	0.1	0.1	0.1	0.0	0.0	0.1
<i>MIDDLE EAST Countries</i>	<i>1.4</i>	<i>0.9</i>	<i>1.8</i>	<i>1.3</i>	<i>1.2</i>	<i>4.7</i>	<i>5.4</i>	<i>5.2</i>	<i>2.1</i>	<i>1.1</i>	<i>1.2</i>	<i>1.4</i>	<i>2.2</i>
<i>of which:</i>													
<i>Bahrain</i>	<i>0.0</i>	<i>0.0</i>	<i>0.0</i>	<i>0.0</i>	<i>0.0</i>	<i>0.0</i>	<i>0.0</i>	<i>0.0</i>	<i>0.0</i>	<i>0.0</i>	<i>0.0</i>	<i>0.0</i>	<i>0.0</i>
<i>Iran</i>	<i>0.0</i>	<i>0.0</i>	<i>0.1</i>	<i>0.0</i>	<i>0.0</i>	<i>0.0</i>	<i>0.0</i>	<i>0.0</i>	<i>0.0</i>	<i>0.0</i>	<i>0.0</i>	<i>0.0</i>	<i>0.0</i>
<i>Jordan</i>	<i>0.0</i>	<i>0.0</i>	<i>0.0</i>	<i>0.0</i>	<i>0.0</i>	<i>0.0</i>	<i>0.0</i>	<i>0.0</i>	<i>0.0</i>	<i>0.0</i>	<i>0.0</i>	<i>0.0</i>	<i>0.0</i>
<i>Kuwait</i>	<i>0.0</i>	<i>0.0</i>	<i>0.0</i>	<i>0.0</i>	<i>0.0</i>	<i>0.1</i>	<i>0.1</i>	<i>0.1</i>	<i>0.0</i>	<i>0.0</i>	<i>0.0</i>	<i>0.0</i>	<i>0.0</i>
<i>Lebanon</i>	<i>0.0</i>	<i>0.0</i>	<i>0.0</i>	<i>0.0</i>	<i>0.0</i>	<i>0.1</i>	<i>0.0</i>	<i>0.0</i>	<i>0.1</i>	<i>0.0</i>	<i>0.0</i>	<i>0.0</i>	<i>0.0</i>
<i>Oman</i>	<i>0.0</i>	<i>0.0</i>	<i>0.0</i>	<i>0.0</i>	<i>0.0</i>	<i>0.0</i>	<i>0.0</i>	<i>0.0</i>	<i>0.0</i>	<i>0.0</i>	<i>0.0</i>	<i>0.0</i>	<i>0.0</i>
<i>Qatar</i>	<i>0.0</i>	<i>0.0</i>	<i>0.0</i>	<i>0.0</i>	<i>0.0</i>	<i>0.0</i>	<i>0.0</i>	<i>0.0</i>	<i>0.0</i>	<i>0.0</i>	<i>0.0</i>	<i>0.0</i>	<i>0.0</i>
<i>Saudi Arabia</i>	<i>1.0</i>	<i>0.3</i>	<i>0.4</i>	<i>0.5</i>	<i>0.4</i>	<i>2.7</i>	<i>3.4</i>	<i>3.4</i>	<i>1.2</i>	<i>0.5</i>	<i>0.5</i>	<i>0.7</i>	<i>1.2</i>
<i>United Arab Emirates</i>	<i>0.3</i>	<i>0.5</i>	<i>1.1</i>	<i>0.7</i>	<i>0.8</i>	<i>1.7</i>	<i>1.7</i>	<i>1.6</i>	<i>0.7</i>	<i>0.6</i>	<i>0.6</i>	<i>0.6</i>	<i>0.9</i>
<i>Other Middle East</i>	<i>0.0</i>	<i>0.0</i>	<i>0.0</i>	<i>0.0</i>	<i>0.0</i>	<i>0.0</i>	<i>0.0</i>	<i>0.0</i>	<i>0.0</i>	<i>0.0</i>	<i>0.0</i>	<i>0.0</i>	<i>0.0</i>
Other Asian	0.0	0.0	0.0	0.0	0.0	0.0	0.0	0.0	0.0	0.0	0.0	0.0	0.0
OCEANIA	1.5	1.0	1.3	1.8	1.3	2.0	2.0	1.9	2.3	1.4	1.4	1.7	1.6
Australia	1.4	0.9	1.2	1.7	1.1	1.8	1.8	1.8	2.2	1.3	1.2	1.6	1.5
New Zealand	0.0	0.1	0.1	0.1	0.1	0.1	0.1	0.1	0.1	0.1	0.1	0.1	0.1
Other Oceanian	0.0	0.0	0.1	0.0	0.1	0.1	0.1	0.0	0.0	0.0	0.0	0.0	0.0
AMERICA	2.2	1.8	1.8	1.5	1.7	2.1	2.0	1.5	1.7	1.6	2.3	1.9	1.9
Brazil	0.4	0.2	0.2	0.3	0.4	0.2	0.2	0.2	0.4	0.3	0.3	0.2	0.3
Canada	0.4	0.5	0.5	0.4	0.5	0.7	0.8	0.5	0.4	0.4	0.8	0.8	0.6
USA	0.8	0.7	0.7	0.6	0.7	1.1	0.9	0.6	0.7	0.7	0.9	0.8	0.8
Other American	0.5	0.5	0.3	0.2	0.2	0.2	0.2	0.2	0.2	0.3	0.3	0.2	0.3
Others & not stated	0.0	0.0	0.1	0.0	0.0	0.0	0.0	0.0	0.0	0.0	0.0	0.0	0.0
All countries	100.0	100.0	100.0	100.0	100.0	100.0	100.0	100.0	100.0	100.0	100.0	100.0	100.0

¹ Provisional⁵ Special Administrative Region of China

Figure 4 - Percentage distribution of tourist arrivals by country of residence, 2018**Table 14 - Percentage distribution of tourist arrivals by purpose of visit, 2011 - 2017**

Purpose of visit	2011	2012	2013	2015	2016	2017 ¹
Leisure/Recreation/Holiday	88.3	88.2	88.7	92.1	93.2	92.7
Business/Seminar/Official Mission	6.2	5.4	4.9	2.6	2.6	3.3
Visiting friends/relatives	2.8	3.3	2.5	2.1	0.9	1.0
Other	2.7	3.1	3.9	3.3	3.3	3.0
TOTAL	100.0	100.0	100.0	100.0	100.0	100.0

Source: Survey of Inbound Tourism

¹ Provisional

Note: Slight discrepancies may occur due to rounding off of figures; Survey of Inbound Tourism was not carried out during the year 2014.

Table 15 - Percentage distribution of tourist arrivals by type of accommodation, 2011 - 2017

Type of Accommodation	2011	2012	2013	2015	2016	2017 ¹
Hotel	78.4	75.1	80.3	82.3	81.2	79.6
Guest House	4.3	5.4	5.4	2.9	4.8	5.0
In own villas / Houses / Bungalows / IRS	NA	NA	1.0	0.6	0.6	0.8
Tourist Residence	9.8	9.7	6.5	8.3	7.3	8.5
With friends/relatives	6.7	9.2	6.2	5.5	5.5	5.8
Other	0.7	0.5	0.7	0.4	0.5	0.3
TOTAL	100.0	100.0	100.0	100.0	100.0	100.0

Source: Survey of Inbound Tourism

NA: Not Available

¹ Provisional

Note: Figures in shaded cells should be treated with caution; they are subject to low reliability since they are based on fewer than 30 observations in the sample; Slight discrepancies may occur due to rounding off of figures; Survey of Inbound Tourism was not carried out during the year 2014.

Table 16 - The main tourist generating countries by rank, 2014 - 2018

Country of Residence						Mean Rank
	2014	2015	2016	2017	2018 ¹	
France	1	1	1	1	1	1
Reunion Island	2	2	2	3	3	2
United Kingdom	3	3	3	2	2	3
South Africa, Rep. of	4	4	4	5	5	4
Germany	6	6	5	4	4	5
India	7	7	6	6	6	6
People's Rep. of China	5	5	7	7	7	7
Switzerland	9	8	8	8	8	8
Italy	8	9	9	9	9	9
Australia	10	10	10	10	10	10
Belgium	13	11	12	12	14	11
Austria	15	14	11	11	11	12
Spain	14	16	13	14	16	13
Malagasy Republic	12	12	15	16	17	14
Sweden	20	13	14	13	15	15
Russian Federation	11	15	19	19	20	16
Netherlands	21	20	17	15	13	17
United Arab Emirates	16	17	18	17	19	18
Czech Republic	19	19	21	20	18	19
USA	17	18	20	21	22	20
Poland	23	23	16	18	21	21
Canada	22	22	24	23	23	22
Seychelles	18	21	23	25	26	23
Saudi Arabia	31	29	32	26	12	24
Denmark	24	24	22	22	24	25
Korea Republic of	26	27	25	24	25	26
Norway	27	25	27	27	27	27
Finland	29	26	28	29	28	28
Portugal	33	32	29	31	29	29
Kenya	25	28	31	34	31	30
Malaysia	28	30	26	30	34	31
Ireland	32	31	30	32	32	32
Brazil	30	34	34	28	33	33
Slovakia	34	33	33	33	30	34

¹ Provisional

Table 17 - Tourist nights by country of residence, 2009 - 2018

Country of Residence	2009	2010 ¹	2011	2012	2013	2014	2015	2016	2017	2018 ²
EUROPE	5,917,949	6,309,738	6,321,635	6,474,801	6,769,651	7,155,716	7,518,217	8,450,414	8,749,223	9,132,988
Austria	92,209	107,902	100,339	97,043	93,864	101,266	127,358	177,805	190,291	199,693
Belgium	138,764	136,864	141,919	148,383	159,824	163,758	183,529	199,467	208,599	196,253
France	2,498,920	2,861,792	2,966,510	2,978,517	3,023,973	3,115,424	3,111,266	3,239,309	3,180,222	3,374,924
Germany	579,531	643,932	662,562	663,498	718,706	776,324	887,733	1,174,417	1,277,191	1,365,304
Italy	512,033	509,369	471,977	387,725	331,093	308,522	296,473	310,194	337,644	370,388
Netherlands	59,667	53,395	52,622	48,432	50,889	53,280	76,752	105,979	136,757	163,588
Russian Federation	NA	72,279	116,692	218,512	184,407	172,525	154,305	122,691	148,907	141,472
Spain	85,056	68,259	73,841	71,931	68,742	72,554	87,418	123,552	120,048	118,058
Sweden	62,581	52,794	49,401	47,556	55,499	64,452	131,795	168,500	175,011	178,537
Switzerland	197,742	241,899	284,738	317,601	347,927	373,111	369,779	414,284	464,546	471,147
United Kingdom	1,281,968	1,205,658	1,057,883	1,140,129	1,370,172	1,528,786	1,599,775	1,717,793	1,728,279	1,712,734
Other European	409,478	355,595	343,153	355,474	364,555	425,714	492,034	696,423	781,728	840,890
AFRICA	1,826,343	1,970,881	2,043,094	2,152,230	2,222,546	2,232,206	2,297,810	2,370,161	2,451,357	2,512,095
Comoros	8,503	12,083	16,162	21,958	22,663	21,731	16,038	18,190	18,192	21,206
Kenya	11,767	11,412	17,802	18,296	22,109	25,045	26,038	25,010	28,272	31,648
Malagasy Rep.	96,282	115,578	107,111	138,998	151,390	181,578	189,158	198,344	210,808	214,942
Reunion Island	969,927	993,837	1,030,720	1,042,124	1,016,159	996,852	998,274	995,309	989,005	952,281
Seychelles	67,976	89,750	81,251	66,202	66,468	62,395	58,787	65,135	64,958	53,417
South Africa, Rep. of	602,983	670,365	704,608	734,287	786,433	784,424	835,862	862,513	920,225	1,003,710
Zimbabwe	12,859	12,223	14,262	17,296	16,471	18,317	20,654	26,359	29,082	34,405
Other African	56,046	65,633	71,178	113,069	140,853	141,864	152,999	179,301	190,815	200,486

¹ As from 2010, a new methodology for computation of tourist nights is being used. "Tourist nights" for a reference period refer to nights spent by tourists departing in that reference period.

² Provisional

NA: not available

Table 17 (Cont'd) - Tourist nights by country of residence, 2009 - 2018

Country of Residence	2009	2010 ¹	2011	2012	2013	2014	2015	2016	2017	2018 ²
ASIA	601,066	725,395	775,625	1,000,684	1,241,976	1,419,254	1,759,764	1,807,292	1,894,193	2,088,393
Hong Kong SAR ³	4,211	4,932	5,434	10,003	9,932	12,646	10,941	10,931	11,432	10,132
India	376,783	412,802	441,355	515,778	578,976	611,798	688,149	750,365	780,775	857,580
Japan	11,481	11,018	9,269	11,141	10,116	8,671	9,047	14,311	14,095	12,148
Malaysia	10,554	11,203	12,228	12,565	19,312	19,268	15,448	22,723	22,791	14,517
Peoples' Rep. of China	69,196	95,055	120,641	226,741	376,235	469,163	650,925	559,972	544,858	513,754
Singapore	11,330	11,902	14,553	15,243	20,004	16,888	15,875	22,161	23,350	22,982
United Arab Emirates	NA	36,279	36,271	36,205	45,811	50,912	61,349	66,518	76,444	77,033
Other Asian	117,511	142,204	135,875	173,008	181,590	229,908	308,030	360,311	420,448	580,247
OCEANIA	148,761	187,384	194,425	228,997	243,036	247,869	253,589	258,787	284,509	290,071
Australia	138,665	173,841	184,783	219,385	223,008	233,759	239,455	241,605	266,452	268,042
Other Oceanian	10,096	13,544	9,642	9,612	20,028	14,110	14,134	17,182	18,057	22,029
AMERICA	131,044	128,287	144,303	179,399	195,003	209,834	218,769	222,561	254,210	267,958
USA	54,075	51,428	59,440	54,691	57,064	66,462	79,294	78,838	85,484	91,356
Canada	58,423	54,625	61,745	86,707	100,371	105,901	104,587	108,033	115,314	125,925
Other American	18,546	22,234	23,118	38,001	37,568	37,471	34,888	35,690	53,412	50,677
Others & Not Stated	14,141	14,761	15,215	7,572	3,386	1,872	1,752	8,692	7,259	4,769
All Countries	8,639,304	9,336,446	9,494,297	10,043,683	10,675,598	11,266,751	12,049,901	13,117,907	13,640,751	14,296,274

¹ As from 2010, a new methodology for computation of tourist nights is being used. "Tourist nights" for a reference period refer to nights spent by tourists departing in that reference period.

² Provisional

³ Special Administrative Region of China

NA: Not Available

Table 18 - Percentage distribution of tourist nights by country of residence, 2009 - 2018

Country of Residence	2009	2010 ¹	2011	2012	2013	2014	2015	2016	2017	2018 ²
EUROPE	68.5	67.6	66.6	64.5	63.4	63.5	62.4	64.4	64.1	63.9
Austria	1.1	1.2	1.1	1.0	0.9	0.9	1.1	1.4	1.4	1.4
Belgium	1.6	1.5	1.5	1.5	1.5	1.5	1.5	1.5	1.5	1.4
France	28.9	30.7	31.2	29.7	28.3	27.7	25.8	24.7	23.3	23.6
Germany	6.7	6.9	7.0	6.6	6.7	6.9	7.4	9.0	9.4	9.6
Italy	5.9	5.5	5.0	3.9	3.1	2.7	2.5	2.4	2.5	2.6
Netherlands	0.7	0.6	0.6	0.5	0.5	0.5	0.6	0.8	1.0	1.1
Russian Federation	NA	0.8	1.2	2.2	1.7	1.5	1.3	0.9	1.1	1.0
Spain	1.0	0.7	0.8	0.7	0.6	0.6	0.7	0.9	0.9	0.8
Sweden	0.7	0.6	0.5	0.5	0.5	0.6	1.1	1.3	1.3	1.2
Switzerland	2.3	2.6	3.0	3.2	3.3	3.3	3.1	3.2	3.4	3.3
United Kingdom	14.8	12.9	11.1	11.4	12.8	13.6	13.3	13.1	12.7	12.0
Other European	4.7	3.8	3.6	3.5	3.4	3.8	4.1	5.3	5.7	5.9
AFRICA	21.1	21.1	21.5	21.4	20.8	19.8	19.1	18.1	18.0	17.6
Comoros	0.1	0.1	0.2	0.2	0.2	0.2	0.1	0.1	0.1	0.1
Kenya	0.1	0.1	0.2	0.2	0.2	0.2	0.2	0.2	0.2	0.2
Malagasy Rep.	1.1	1.2	1.1	1.4	1.4	1.6	1.6	1.5	1.5	1.5
Reunion Island	11.2	10.6	10.9	10.4	9.5	8.8	8.3	7.6	7.3	6.7
Seychelles	0.8	1.0	0.9	0.7	0.6	0.6	0.5	0.5	0.5	0.4
South Africa, Rep. of	7.0	7.2	7.4	7.3	7.4	7.0	6.9	6.6	6.7	7.0
Zimbabwe	0.1	0.1	0.2	0.2	0.2	0.2	0.2	0.2	0.2	0.2
Other African	0.6	0.7	0.7	1.1	1.3	1.3	1.3	1.4	1.4	1.4
ASIA	7.0	7.8	8.2	10.0	11.6	12.6	14.6	13.8	13.9	14.6
Hong Kong SAR ³	0.0	0.1	0.1	0.1	0.1	0.1	0.1	0.1	0.1	0.1
India	4.4	4.4	4.6	5.1	5.4	5.4	5.7	5.7	5.7	6.0
Japan	0.1	0.1	0.1	0.1	0.1	0.1	0.1	0.1	0.1	0.1
Malaysia	0.1	0.1	0.1	0.1	0.2	0.2	0.1	0.2	0.2	0.1
Peoples' Rep. of China	0.8	1.0	1.3	2.3	3.5	4.2	5.4	4.3	4.0	3.6
Singapore	0.1	0.1	0.2	0.2	0.2	0.1	0.1	0.2	0.2	0.2
United Arab Emirates	NA	0.4	0.4	0.4	0.4	0.5	0.5	0.5	0.6	0.5
Other Asian	1.4	1.5	1.4	1.7	1.7	2.0	2.6	2.7	3.1	4.1
OCEANIA	1.7	2.0	2.0	2.3	2.3	2.2	2.1	2.0	2.1	2.0
Australia	1.6	1.9	1.9	2.2	2.1	2.1	2.0	1.8	2.0	1.9
Other Oceanian	0.1	0.1	0.1	0.1	0.2	0.1	0.1	0.1	0.1	0.2
AMERICA	1.5	1.4	1.5	1.8	1.8	1.9	1.8	1.7	1.9	1.9
USA	0.6	0.6	0.6	0.5	0.5	0.6	0.7	0.6	0.6	0.6
Canada	0.7	0.6	0.7	0.9	0.9	0.9	0.9	0.8	0.8	0.9
Other American	0.2	0.2	0.2	0.4	0.4	0.3	0.3	0.3	0.4	0.4
Others & Not Stated	0.2	0.2	0.2	0.1	0.0	0.0	0.0	0.1	0.1	0.0
All Countries	100.0	100.0	100.0	100.0	100.0	100.0	100.0	100.0	100.0	100.0

¹ As from 2010, a new methodology for computation of tourist nights is being used.

² Provisional

³ Special Administrative Region of China

NA: Not Available

Table 19 - Average length of stay (nights) of tourists by country of residence, 2009 - 2018

Country of Residence	2009	2010 ¹	2011	2012	2013	2014	2015	2016	2017	2018 ²
EUROPE	10.1	10.8	10.5	11.7	12.4	12.6	12.0	11.6	11.4	11.3
Austria	11.1	12.1	11.7	12.0	12.0	12.3	11.5	11.1	11.0	10.9
Belgium	13.3	13.0	12.2	13.5	13.7	14.5	13.0	13.0	12.8	12.5
France	8.9	9.9	9.8	11.5	12.4	12.8	12.3	11.9	11.8	11.9
Germany	11.2	12.3	12.1	12.2	12.0	12.5	12.0	11.5	11.1	10.8
Italy	8.7	9.4	9.3	9.8	10.4	10.6	10.3	10.2	10.0	9.9
Netherlands	10.7	11.0	10.6	11.2	11.2	11.3	11.2	10.8	10.5	10.0
Russian Federation	NA	11.5	10.9	11.7	12.2	13.0	13.1	13.3	13.7	13.4
Spain	11.7	8.4	7.8	7.6	8.2	8.5	8.8	8.2	8.0	7.9
Sweden	11.7	11.9	12.0	11.4	12.5	11.4	11.8	11.6	11.5	11.5
Switzerland	12.7	12.9	12.1	12.4	12.6	12.8	12.1	11.7	11.8	11.5
United Kingdom	12.4	12.9	12.3	13.2	13.8	13.3	12.4	12.2	11.7	11.5
Other European	9.9	10.7	10.7	11.1	11.3	11.4	10.8	10.4	10.7	10.4
AFRICA	8.8	9.5	9.2	8.1	8.0	8.2	8.1	8.2	8.1	8.1
Comoros	14.0	16.0	17.2	21.2	19.8	23.5	20.0	23.9	20.8	22.4
Kenya	8.4	7.7	9.2	6.9	7.7	7.6	7.8	7.8	8.3	8.0
Malagasy Rep.	11.4	11.8	9.9	10.3	11.4	14.1	15.8	17.6	17.0	15.3
Reunion Island	9.1	9.9	9.8	7.5	7.1	7.1	6.9	6.8	6.8	6.9
Seychelles	8.8	9.3	9.5	9.5	9.3	9.2	10.3	10.6	10.4	9.9
South Africa, Rep. of	7.9	8.6	8.3	8.3	8.4	8.5	8.3	8.4	8.3	7.9
Zimbabwe	9.5	10.1	9.8	11.4	11.0	10.5	11.2	13.2	11.5	13.9
Other African	9.2	10.4	9.7	9.9	10.4	10.7	10.2	11.0	10.8	10.9
ASIA	9.5	10.2	9.0	10.0	9.6	9.1	9.1	8.8	9.1	10.0
Hong Kong SAR ³	10.7	12.4	9.6	7.7	7.1	8.7	8.3	8.2	7.5	6.9
India	9.5	8.6	8.4	9.6	10.2	10.1	9.6	9.2	9.2	10.1
Japan	8.3	7.9	6.3	7.0	5.8	5.3	6.6	5.5	6.1	6.0
Malaysia	8.6	7.9	6.3	6.6	6.2	6.4	6.1	5.0	5.2	6.4
Peoples' Rep. of China	9.8	13.9	8.3	11.3	9.2	7.4	7.3	7.1	7.5	7.9
Singapore	6.8	6.4	6.1	7.5	9.5	9.2	9.0	7.9	7.3	8.0
United Arab Emirates	NA	11.0	10.3	6.5	5.6	6.4	6.9	6.8	6.5	6.4
Other Asian	10.0	17.8	14.1	12.9	11.9	14.8	17.1	15.6	16.1	15.1
OCEANIA	13.2	13.9	12.3	12.8	12.4	13.4	13.4	13.3	12.6	12.9
Australia	13.2	13.6	12.4	12.9	12.2	13.5	13.5	13.4	12.7	12.9
Other Oceanian	12.9	17.3	10.5	11.1	15.5	11.9	11.7	11.7	11.4	13.3
AMERICA	9.9	11.0	10.9	11.3	12.8	12.9	12.6	11.6	10.6	10.8
USA	7.6	8.6	9.4	9.3	10.2	9.7	9.6	9.4	9.1	9.2
Canada	16.4	17.0	16.6	19.5	22.0	21.8	19.2	18.5	17.5	16.9
Other American	7.0	8.9	7.1	7.0	7.4	8.3	9.4	7.1	6.6	6.7
All Countries	9.8	10.5	10.1	10.5	10.8	10.9	10.6	10.4	10.3	10.4

¹ As from 2010, a new methodology for computation of average length of stay is being used. "Average length of stay" refers to average number of nights spent by tourists departing in the reference period.

² Provisional

³ Special Administrative Region of China

NA: Not Available

Table 20 - Gross earnings (Rs Million) from tourism, 2009 - 2018

Year	Jan - June	July - Dec	Whole Year
2009	18,249	17,444	35,693
2010	19,809	19,647	39,456
2011	21,304	21,413	42,717
2012	23,548	20,830	44,378
2013	22,055	18,502	40,557
2014	22,577	21,727	44,304
2015	24,240	25,951	50,191
2016	27,188	28,679	55,867
2017	29,319	30,943	60,262
2018 ¹	33,460	30,578	64,037

¹ Provisional; As from 2015, BoM is also including data culled from Money changers and Foreign exchange dealers

Source : Bank of Mauritius

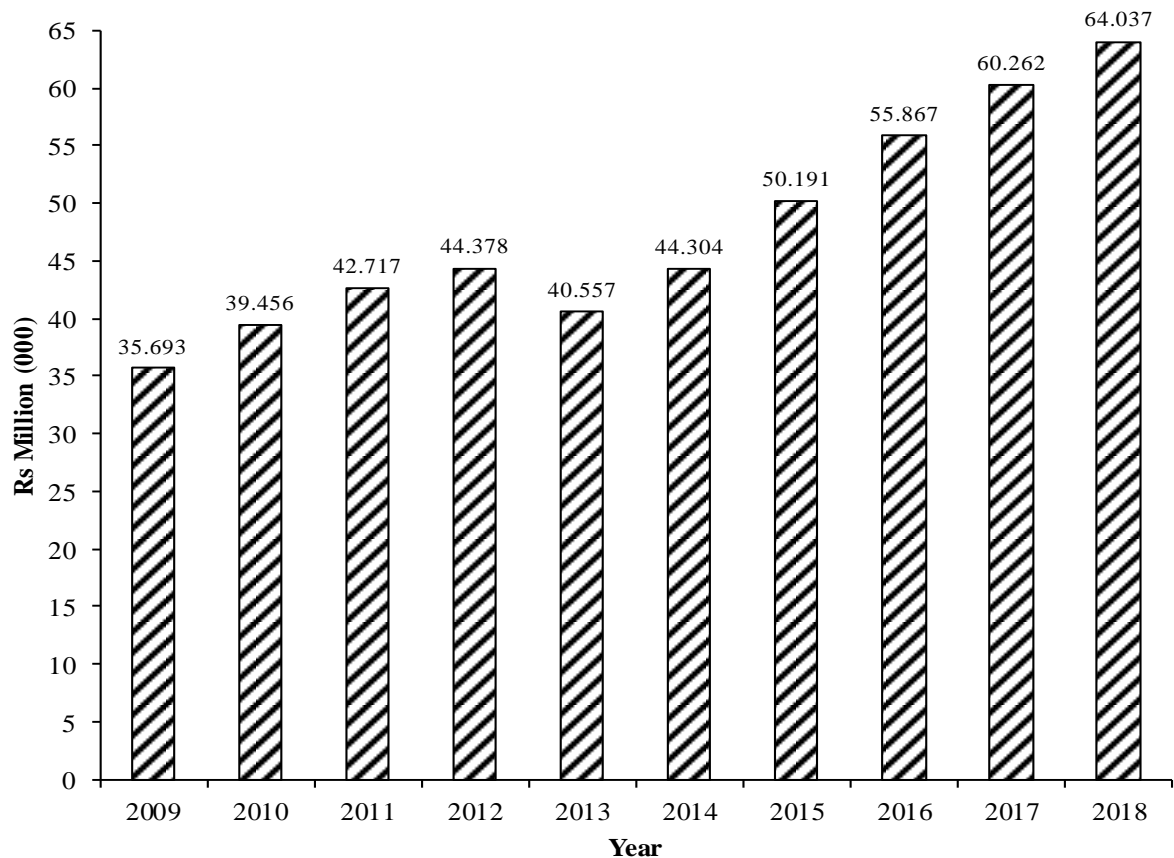
Figure 5 - Gross earnings (Rs Million) from tourism, 2009 - 2018

Table 21 - Expenditure of tourists by country of residence, 2011 - 2017

Country of residence	Expenditure (Rs Mn)					
	2011	2012	2013	2015	2016	2017 ¹
France	11,362.9	10,316.0	10,991.1	10,622.2	11,704.4	11,958.6
Germany	2,816.3	2,922.9	3,211.3	3,512.4	4,846.9	5,400.8
Italy	2,330.9	1,597.8	1,382.9	1,193.7	1,232.4	1,407.7
Russian Federation	732.4	1,090.9	966.7	764.8	413.7	803.3
Switzerland	1,270.7	1,436.8	1,709.4	1,708.3	2,080.1	2,540.1
United Kingdom	4,390.6	4,432.1	4,822.9	6,774.2	6,873.8	7,127.5
Reunion Island	3,053.6	3,194.2	3,472.4	3,295.4	3,608.2	3,335.2
South Africa, Rep. of	3,340.4	3,326.7	3,493.1	3,178.2	3,304.4	3,850.1
Peoples' Rep. of China	603.7	1,053.1	2,034.4	4,672.6	4,368.0	4,047.5
India	1,691.2	1,727.2	1,784.1	2,411.1	3,345.1	3,143.7
Other countries	6,954.5	7,553.8	8,009.1	11,876.2	14,465.9	16,489.3
All Countries	38,547.1	38,651.4	41,877.3	50,009.1	56,242.9	60,103.8

¹ Provisional

Source: Survey of Inbound Tourism conducted by Statistics Mauritius; Survey of Inbound Tourism was not carried out during the year 2014.

Note: Slight discrepancies may occur due to rounding off of figures; Figures in shaded cells should be treated with caution; they are subject to low reliability since they are based on fewer than 30 observations in the sample.

Table 22 - Expenditure of tourists by type of expenditure, 2011 - 2017

Type of expenditure	Expenditure (Rs Mn)					
	2011	2012	2013	2015	2016	2017 ¹
Accommodation	23,197.1	22,603.0	24,673.5	30,269.5	34,133.2	37,088.1
Meals & Beverages	4,829.6	5,475.4	4,194.3	5,437.8	5,884.5	6,392.4
Transport	3,019.3	2,882.4	3,313.0	2,261.5	2,574.2	2,662.1
Entertainment	3,031.2	3,178.1	4,557.6	5,686.4	6,759.8	6,705.9
Shopping	4,029.4	4,134.2	4,412.9	5,082.7	5,033.4	5,236.5
Other	440.4	378.3	726.1	1,271.3	1,857.9	2,018.7
TOTAL	38,547.1	38,651.4	41,877.3	50,009.1	56,242.9	60,103.8

¹ Provisional

Source: Survey of Inbound Tourism conducted by Statistics Mauritius

Note: Slight discrepancies may occur due to rounding off of figures; Survey of Inbound Tourism was not carried out during the year 2014.

Table 23 - Average expenditure of tourists by country of residence, 2011 - 2017

Country of residence	Expenditure (Rs)					
	2011	2012	2013	2015	2016	2017 ¹
France	40,227	40,151	44,907	41,917	43,063	44,468
Germany	49,996	52,964	53,053	48,175	47,360	46,977
Italy	44,190	39,937	44,317	42,527	40,499	41,851
Russian Federation	59,913	56,146	64,858	65,465	49,390	78,039
Switzerland	52,160	55,258	61,585	56,459	58,671	64,282
United Kingdom	49,790	50,567	49,205	52,819	48,938	48,192
Reunion Island	23,040	22,130	24,263	22,839	24,735	22,780
South Africa, Rep. of	38,737	37,354	37,079	31,408	32,339	34,571
Peoples' Rep. of China	39,890	50,424	48,538	52,509	55,004	55,620
India	31,345	31,291	31,160	33,779	40,922	36,892
Other Countries	43,338	44,237	44,631	57,511	55,366	56,969
All Countries	39,960	40,035	42,168	43,986	44,660	45,518

Source: Survey of Inbound Tourism conducted by Statistics Mauritius; Survey of Inbound Tourism was not carried out during the year 2014.

¹ Provisional

Note:- Figures in shaded cells should be treated with caution; they are subject to low reliability since they are based on fewer than 30 observations in the sample.

Table 24 - Hotels ¹, rooms and bedplaces, 2009 - 2018

Year	Number as at end of period					
	All Hotels			"Large" Hotels		
	No. of hotels	No. of rooms	No. of bedplaces	No. of hotels	No. of rooms	No. of bedplaces
2009	102	11,456	23,235	46	8,647	17,586
2010	112	12,075	24,698	50	9,061	18,597
2011	109	11,925	24,242	48	8,863	18,153
2012	117	12,527	25,496	52	9,293	19,041
2013	107	12,376	25,105	50	9,239	18,799
2014	112	12,799	26,174	53	9,605	19,776
2015	115	13,617	28,732	55	10,378	22,096
2016	111	13,547	29,139	56	10,480	22,839
2017	111	13,511	29,650	57	10,570	23,579
2018 ²	113 ³	13,574	30,427	57	10,585	24,218

¹ Refers to hotels in the Island of Mauritius which were operational

² Provisional

³ Excluding one hotel not operational because of renovation works

Table 25 - Monthly occupancy rates in all hotels, 2014 - 2018

Month	2014		2015		2016		2017		2018 ¹	
	Room	Bed	Room	Bed	Room	Bed	Room	Bed	Room	Bed
January	72	64	75	69	78	71	81	73	77	70
February	67	59	75	69	76	68	81	72	79	71
March	64	56	68	62	74	64	76	67	76	69
April	65	57	68	63	69	62	78	68	73	67
May	59	52	66	60	67	60	68	61	70	63
June	46	41	51	46	54	48	60	52	60	53
July	54	49	61	58	65	60	73	66	68	63
August	62	57	66	63	70	64	75	67	76	70
September	64	58	70	64	75	65	77	67	79	69
October	71	65	74	65	81	72	85	75	81	72
November	76	67	79	68	85	74	86	74	83	71
December	74	68	78	71	81	73	81	72	76	69
Whole Year	65	58	70	63	73	65	77	68	75	67

¹ Provisional

Table 26 - Monthly occupancy rates in large ¹ hotels, 2014 - 2018

Month	2014		2015		2016		2017		2018 ²	
	Room	Bed	Room	Bed	Room	Bed	Room	Bed	Room	Bed
January	74	66	77	72	81	74	83	74	78	72
February	69	61	79	73	80	72	82	74	81	74
March	65	57	70	65	78	67	77	68	78	72
April	69	60	71	66	73	67	80	71	75	70
May	62	54	68	63	69	62	69	64	72	65
June	47	41	52	48	56	51	61	55	62	56
July	57	52	65	62	68	64	76	69	71	66
August	67	62	70	67	74	68	79	71	79	74
September	68	61	74	68	78	68	79	69	82	72
October	75	68	77	69	84	75	87	78	83	75
November	78	70	82	72	87	75	87	75	84	72
December	76	71	81	74	82	75	82	73	77	70
Whole Year	67	60	72	67	76	68	79	70	77	70

¹ Large hotels are well established beach hotels of over 80 rooms

² Provisional

$$\text{Room Occupancy Rate} = \frac{\text{Total number of room nights rented} \times 100}{\text{Total number of room nights available}}$$

$$\text{Bed Occupancy Rate} = \frac{\text{Total number of bed nights rented} \times 100}{\text{Total number of bed nights available}}$$

Table 27 - Employment in large ¹ establishments of the tourism industry as at end of March, 2009 - 2018

Establishments	2009	2010	2011	2012 ²	2013 ²	2014 ²	2015 ²	2016 ²	2017 ²	2018 ³
Food service	2,585	2,562	2,627	2,911	3,027	3,109	3,203	3,313	3,110	3,198
Hotels	20,904	21,255	21,815	22,210	22,382	22,544	22,568	23,624	24,098	24,142
Travel and Other Services ⁴	4,206	3,899	4,100	3,946	3,865	3,806	3,793	3,755	3,664	3,604
Total	27,695	27,716	28,542	29,067	29,274	29,459	29,564	30,692	30,872	30,944

Source: Survey of Employment and Earnings in large Establishments

¹ Large establishments are those employing 10 or more persons.

² Revised ³ Provisional

⁴ Travel and other services include air transport services, tour operators, travel agencies and car rental.

SELECTED TOURISM STATISTICS

Year	Number			Tourism Earnings ⁴ (Rs. Mn)
	Hotels ¹	Rooms	Tourist arrivals	
1986	56	2,888	165,310	1,190
1987	60	3,108	207,570	1,786
1988	64	3,399	239,300	2,381
1989	67	3,605	262,790	2,796
1990	75	4,603	291,550	3,630
1991	80	5,064	300,670	3,940
1992	84	5,271	335,400	4,655
1993	85	5,341	374,630	5,362
1994	90	5,888	400,526	6,415
1995	95	5,977	422,463	7,472
1996	90	6,668	486,867	9,048
1997	87	6,809	536,125	10,068
1998	90	7,267	558,195	11,890
1999	92	8,255	578,085	13,668
2000	95	8,657	656,453	14,234
2001	95	9,024	660,318	18,166
2002	95	9,623	681,648	18,328
2003	97	9,647	702,018	19,415
2004	103	10,640	718,861	23,448
2005	99	10,497	761,063	25,704
2006	98	10,666	788,276	31,942
2007	97	10,857	906,971	40,687
2008	102	11,488	930,456	41,213
2009	102	11,456	871,356	35,693
2010	112	12,075	934,827	39,456
2011	109	11,925	964,642	42,717
2012	117	12,527	965,441	44,378
2013	107	12,376	992,503	40,557
2014	112	12,799	1,038,334	44,304
2015	115	13,617	1,151,252	50,191
2016	111	13,547	1,275,227	55,867
2017	111	13,511	1,341,860	60,262
2018 ²	113 ³	13,574	1,399,408	64,037

¹ Refers to hotels in the Island of Mauritius which were operational

² Provisional ³ Excluding one hotel not operational because of renovation works

⁴ Source: Bank of Mauritius; As from 2015, BoM is also including data culled from Money changers and Foreign exchange dealers